



A000698071

OFFICE OF THE COUNTY RECORDER
CASS COUNTY, MINNESOTA
CERTIFIED, FILED, AND/OR
RECORDED ON

10/18/2023 12:28:30 PM

AS DOC #: A000698071

PAGES: 2

REC FEES: 0.00

KATHRYN M. NORBY
CASS COUNTY RECORDER

BY SF Dep TX#: 192713

I hereby certify that this survey, plan, or report was prepared by me or under my direct supervision and that I am a duly Licensed Land Surveyor under the laws of the state of Minnesota.

Daniel J. McAninch 17 October 2023
Daniel J. McAninch Date
MN LIC.# 25684

CERTIFICATE OF LOCATION OF GOVERNMENT CORNER

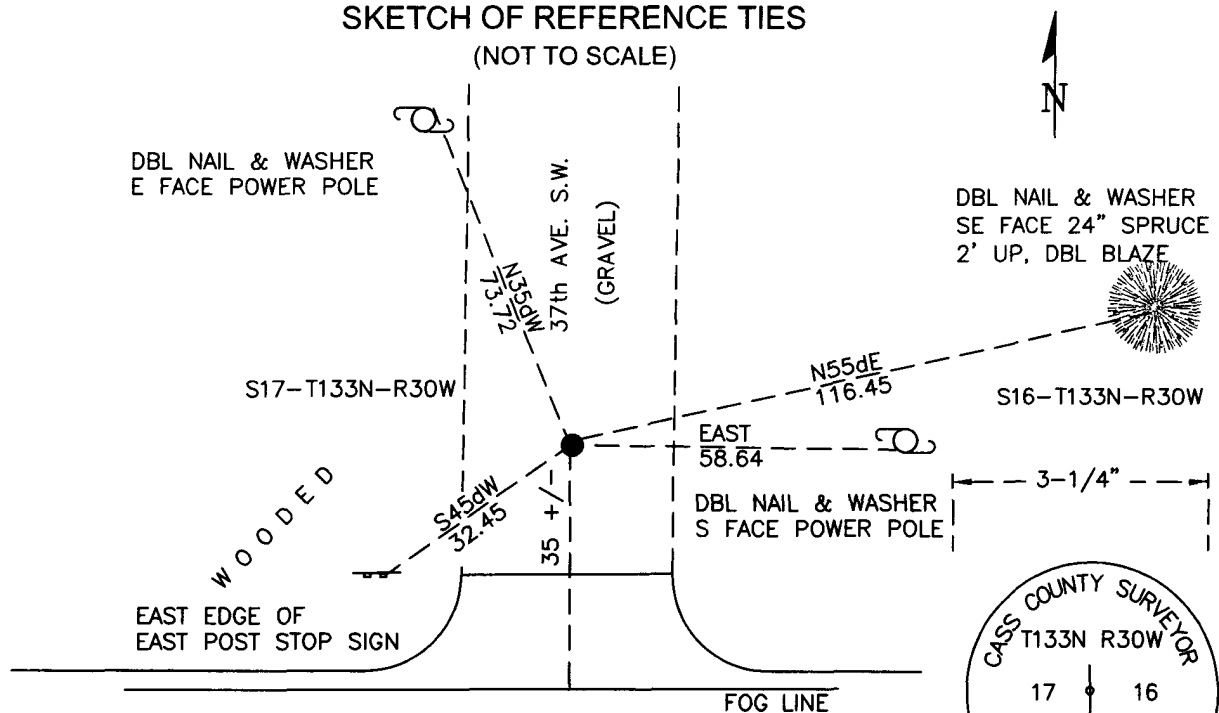
East 1/4 Corner of Section 17, Township 133 N, Range 30, W P.M. 5th
County of Cass, State of Minnesota

At the corner location shown on the sketch:

- ☐ On _____ found _____
- ☐ left monument as found ☐ lowered monument ☐ removed monument (explain)
- ☒ On November 12, 2023 set 1" Aluminum monument with 3-1/4" stamped cap

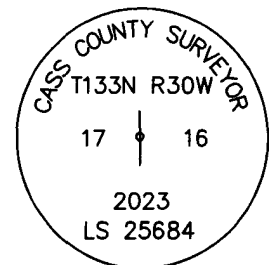
SKETCH OF REFERENCE TIES

(NOT TO SCALE)



Cass County Coordinates
(North Zone, 2011 Adj.)
N: 164391.375
E: 497979.629

MN HIGHWAY 210
(BITUMINOUS)



Cap Stamping Detail

STATEMENT OF EVIDENCE:

EAST QUARTER CORNER OF SECTION 17
TOWNSHIP 133 NORTH, RANGE 30 WEST,
CASS COUNTY, MINNESOTA

- 1870** The original public land survey set a wood post to mark the corner. The bearing trees were marked and measured to. Copies of original notes on file in the Cass County Highway Department/Surveyor's office.
- | | | |
|-----------|-------|-------------------|
| 4" Willow | N23dW | 23 links (15.2') |
| 6" Poplar | N57dE | 123 links (18.2') |
- 1911** John Curo found an old cast iron sled shoe and the root of the NW bearing tree. He set a 2" diameter by 48" long iron pipe (Cass County Surveyor's Book A, Page 353-360; Curo Book 74, Page 50)
- 1944** An unknown surveyor called for an iron pin at the intersection of roads. (See KLD Cert Doc. A000432820)
- 1952** After the re-alignment of Trunk Highway 210, an unknown surveyor called for an iron pipe iron pin at the intersection of roads. Ties were made to a garage foundation, an elm and an iron pin. (See Kramer Cert Doc. A0004328)
- 1984** Ron Murphy of Comstock and Davis set a County Cast Iron Monument took ties and recorded a certificate. (See Doc. A0004328)
- 1999** A MNDOT crew recovered the cast iron monnument and three bearing trees and an additional tie was made to a power pole. (See Doc. A000432820)
- 2022** A Cass Country survey crew conducted a thorough search in the vicinity of the corner. The cast iron monument along with all previous ties and bearing trees had been removed. Using a right of way map and section breakdown sheet dated 11/28/00 prepared by MNDOT, the corner was reestablished using GPS and verified with highway monuments and local right of way monuments located south of the section corner in Pillager. (County Project 2022-006)
SEE PAGE 1 OF 2 FOR TIES

CASS COUNTY COORDINATES (NAD 83 2011 ADJUSTMENT)**N-164,391.375****E-497,979.629**

General Land Office Information on file in the MN historical Society, St. Paul MN. Copies on file in the Cass County Highway Department/Surveyors Office (CCHD/SO).

For additional information contact:
Cass County Highway Department
County Surveyor's Office
8045 County Road 12
Walker, MN 56484
218-547-1211