



A000709460

OFFICE OF THE COUNTY RECORDER  
CASS COUNTY, MINNESOTA  
CERTIFIED, FILED, AND/OR  
RECORDED ON

2/20/2025 1:45:00 PM

AS DOC #: A000709460

PAGES: 2

REC FEES: 0.00

BY SW \_\_\_\_\_ Dep TX#: 202123

I hereby certify that this survey, plan, or report was prepared by me or under my direct supervision and that I am a duly Licensed Land Surveyor under the laws of the state of Minnesota.

Daniel J. McAninch 20 Feb. 2025  
Daniel J. McAninch Date  
MN LIC. #25684

## CERTIFICATE OF LOCATION OF GOVERNMENT CORNER

CENTER of Section 1, Township 139 N, Range 28 W, 5th P.M.  
County of Cass, State of Minnesota

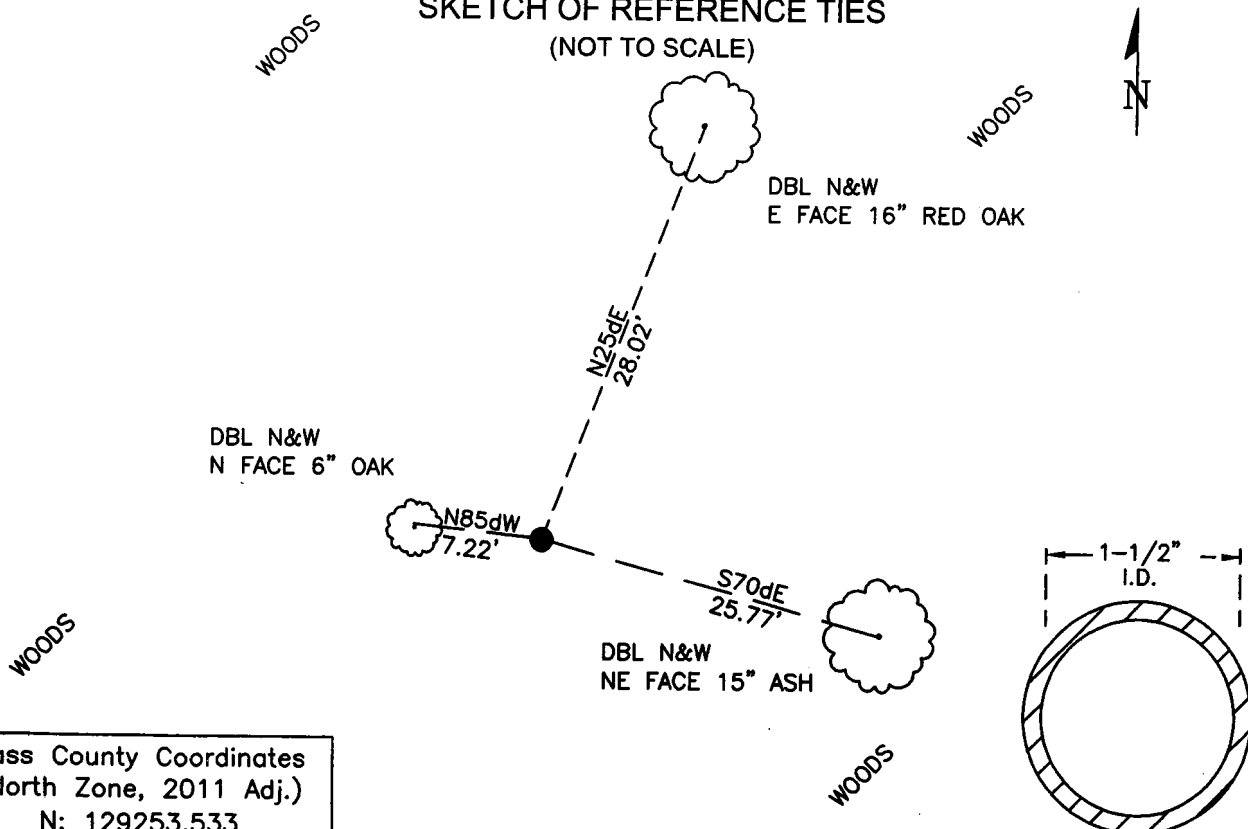
At the corner location shown on the sketch:

☒ On September 6, 2024 found 1-1/2" diameter iron pipe, 2.5 feet up from the ground

☒ left monument as found ☐ lowered monument ☐ removed monument (explain)

☐ On \_\_\_\_\_ set \_\_\_\_\_

### SKETCH OF REFERENCE TIES (NOT TO SCALE)



Cass County Coordinates  
(North Zone, 2011 Adj.)  
N: 129253.533  
E: 513165.928

Cap Stamping Detail

**STATEMENT OF EVIDENCE:**

CENTER OF SECTION 25,  
TOWNSHIP 139 NORTH, RANGE 28 WEST,  
CASS COUNTY, MINNESOTA (BLIND LAKE TWP.)

- 1921** Deputy County Surveyor, Ben F. Clark set a monument at the center of Section 25. (Survey of Sections 25-26-35-36 in T 139 N, R28 W, 5<sup>th</sup> P.M. – Doc. 69794, recorded March 9, 1922)
- 2013** KLJ completed a survey in Section 25 and published a section breakdown that shows the center of section to be at the intersection of the quarter lines. (BLM Manual method) (KLJ Proj. 511612100)
- 2024** A Cass County survey crew recovered a 1-1/2 inch diameter iron pipe protruding 2 feet above the ground. This pipe was accepted as the one set in 1921 by Ben F. Clark. As the monument was witnessed by local land owners and officially accepted by the Cass County Board of Commissioners on March 1, 1922, it is accepted as the physical location of the corner. (Cass Proj. 2024-019)

**CASS COUNTY COORDINATES (NAD 83 2011 ADJUSTMENT, NORTH ZONE)****N-108270.502****E-513041.082**

General Land Office Information on file in the MN historical Society, St. Paul MN. Copies on file in the Cass County Highway Department/Surveyors Office (CCHD/SO).

For additional information contact:  
**Cass County Highway Department**  
**County Surveyor's Office**  
8045 County Road 12  
Walker, MN 56484  
218-547-1211