



A000710969

OFFICE OF THE COUNTY RECORDER
CASS COUNTY, MINNESOTA
CERTIFIED, FILED, AND/OR
RECORDED ON

5/1/2025 10:08:48 AM

AS DOC #: A000710969

PAGES: 2

REC FEES: 0.00

BY SW Dep TX#: 203461Index No. E-13

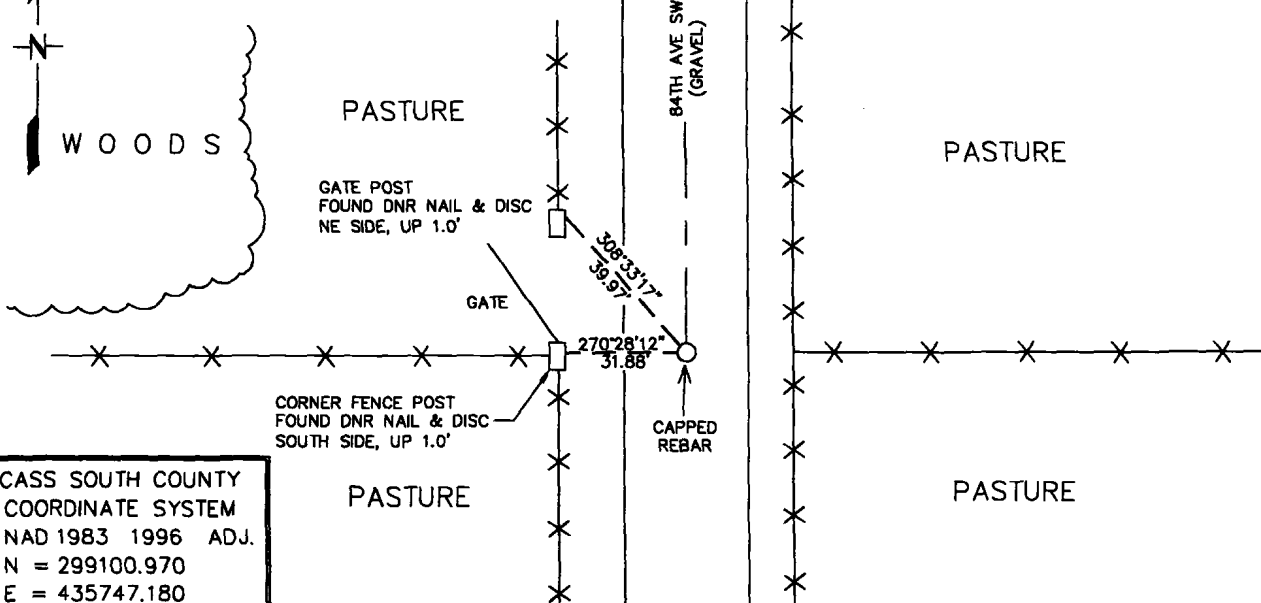
CERTIFICATE OF LOCATION OF GOVERNMENT CORNER

NORTHEAST Corner of Section 9, Township 137N, Range 32W5th Principal Meridian, State of Minnesota, County of CASS

At the corner location shown on the sketch:

- On 3/13/2025 found a 3/4" REBAR WITH A BROKEN CAP, DOWN 0.4', IN THE CL
DATE
OF A N-S GRAVEL ROAD AND IN LINE WITH FENCES, EAST-WEST.
☒ left monument as found, ☐ lowered monument, ☐ removed monument (explain)
- On 3/13/2025 Placed a REMOVED BROKEN CAP AND PLACED A CAP STAMPED
DATE
"MN DNR LS 62745" ON REBAR.

- AZIMUTHS ARE CASS COUNTY ORIENTATION
 - DRAWING IS NOT TO SCALE



Statement of evidence for this corner location is on back of this page.

AMD 4/10/2025
SFTXXXXX.00.00.01

I hereby certify that this plan, specification, or report was prepared by me or under my direct supervision and that I am a duly Licensed Land Surveyor under the laws of the State of Minnesota.

SIGNATURE Anthony M. Djonne DATE 4-30-25 License Number 62745Title: ☒ Land Surveyor ☐ Professional Engineer ☐ County Surveyor ☐ County Engineer

Northeast Corner Section 9, Township 137 North, Range 32 West, 5th Principal Meridian

The DNR Land Survey Unit contacted the following offices for information regarding this corner:

MN Historical Society
 MN Department of Transportation (MnDot)
 Cass County Highway Department
 Cass County Surveyor (CCSO) and GIS Site
 Northern Engineering and Consulting (NECI)

- 1870 The US General Land Office field notes, on file in the MN Historical Society, show this corner to be marked with a post and the following bearing trees were marked:

Ash	8"	S13°E	28 Links
Oak	5"	N45 ½ °E	43 Links
Dead Elm	16"	N62 ½ °W	45 Links
Black Ash	8"	S61°W	62 Links

- 1918 Survey Record book 236, shows an I.P. at the corner.
- 2003 March, the DNR Land Survey Unit searched for evidence of the corner and observed the centerline of a north-south road and fence lines east and west. No other evidence of the corner was found. A DNR survey marker (3/4" iron rod with cap) was set at the intersection of the road and fence lines marking the obliterated position of the corner.
- 2018 A Certificate of Survey and field notes, completed and compiled by Northern Engineering and Consulting, shows the corner to be a ¾" monument, down 10".
- 2025 March, the DNR Land Survey Unit searched for evidence of the corner and found a ¾" rebar with broken cap, down 0.4', at the intersection of the centerline of a North-South gravel road and fence lines, East and West. Also found were 2 ties from the 2003 DNR survey and those ties fit well with the data shown in the field notes from that survey. This location matches the position of the monument found and held by NECI in 2018. The monument is also the same type of set by the DNR in the 2003 survey. A new cap (LS 62745) was placed on the rebar, and it was found to measure:

5227.84 feet (GLO = 5296.50 ft) from the NE Corner Section 10
 5241.07 feet (GLO = 5329.50 ft) from the NE Corner Section 4

Analysis of the available information led me to accept the found rebar with broken cap as the corner. It agrees with record GLO distances (within reason), subsequent surveys, and long-standing lines of occupation.