



A000710970

OFFICE OF THE COUNTY RECORDER
CASS COUNTY, MINNESOTA
CERTIFIED, FILED, AND/OR
RECORDED ON

5/1/2025 10:08:49 AM

AS DOC #: A000710970

PAGES: 3

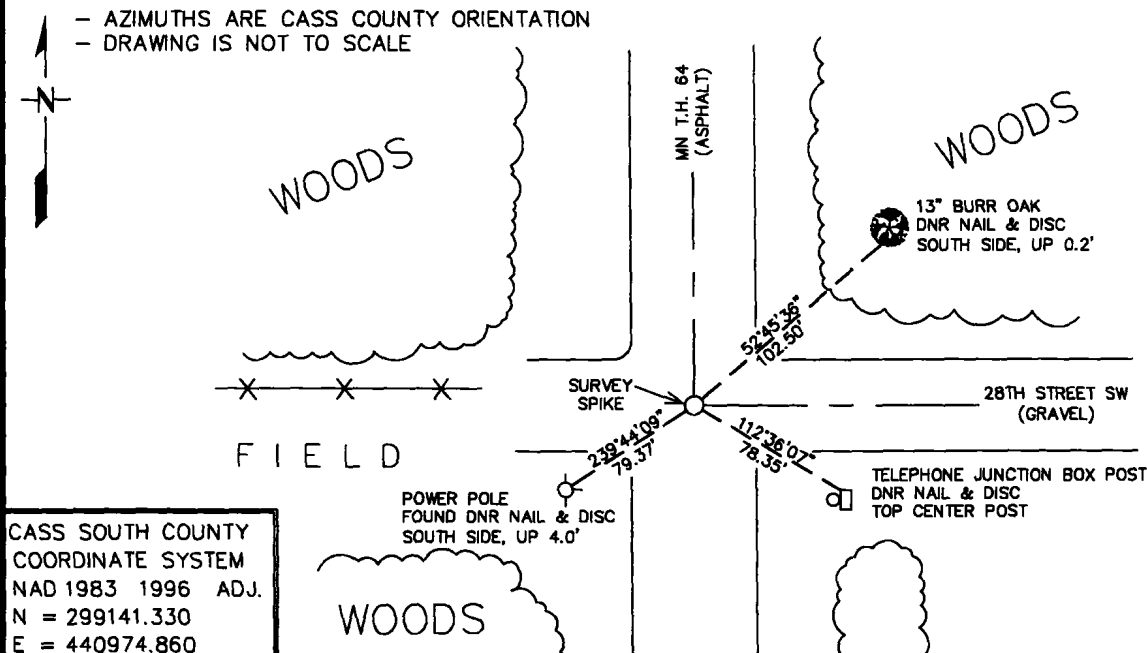
REC FEES: 0.00

BY SW Dep TX#: 203461Index No. E-17

CERTIFICATE OF LOCATION OF GOVERNMENT CORNER

NORTHEAST Corner of Section 10 , Township 137N , Range 32W5th Principal Meridian, State of Minnesota, County of CASS

At the corner location shown on the sketch:

■ On 3/13/2025 found a NO ORIGINAL OR SUBSEQUENT SURVEY EVIDENCE
DATE☐ left monument as found, ☐ lowered monument, ☐ removed monument (explain)■ On 3/20/2025 Placed a 3" SURVEY SPIKE, DOWN 0.05', AT THE INTERSECTION OF
DATE
ROAD CENTERLINES, NORTH-SOUTH AND EAST.- AZIMUTHS ARE CASS COUNTY ORIENTATION
- DRAWING IS NOT TO SCALECASS SOUTH COUNTY
COORDINATE SYSTEM
NAD 1983 1996 ADJ.
N = 299141.330
E = 440974.860

Statement of evidence for this corner location is on back of this page.

AMD 4/10/2025
SFTXXXXX.00.00.01

I hereby certify that this plan, specification, or report was prepared by me or under my direct supervision and that I am a duly Licensed Land Surveyor under the laws of the State of Minnesota.

SIGNATURE Anthony M. Djonne DATE 4-30-25 License Number 62745Title: ☒ Land Surveyor ☐ Professional Engineer ☐ County Surveyor ☐ County Engineer

Northeast Corner Section 10, Township 137 North, Range 32 West, 5th Principal Meridian

The DNR Land Survey Unit contacted the following offices for information regarding this corner:

MN Historical Society
 MN Department of Transportation (MnDot)
 Cass County Highway Department
 Cass County Surveyor's Office (CCSO) and GIS Site
 Northern Engineering and Consulting (NECI)

- 1870 The US General Land Office field notes, on file with the MN Historical Society, show this corner to be marked with a post and the following bearing trees were marked:
 Aspen 10" S 16° W 8 links (5.28')
 Aspen 6" S 75° E 35 links (23.10')
 Aspen 6" N 69 ½° E 32 links (21.12')
 Aspen 12" N 82° W 1.33 chains (87.78')
- 1913 John Curo, Cass County Surveyor, in a resurvey of many sections in this township, found the southwest and northeast GLO bearing trees plainly marked from which he set a 2 ½" x 48" galvanized iron pipe capped on top and set nearly its full length.
- 1916 E.B. Horst, Cass County Surveyor's Office, in a resurvey of Ansel Township, searched for evidence of the corner and found no bearing trees. After digging up 25 feet of the State Highway he found an iron monument and the following ties were marked:
 White Pine 14" N 39°26' E 117.8' to tack (used as B.M.)
 Blue Stone set nearly 4" square x 20" long S 45° E 46.67'
- 19?? MnDot construction plans of State T.H. 64 show a monument set at the intersection of the centerline of State Highway 64 and at the centerline of east-west roads.
- 2003 March, the DNR Land Survey Unit searched for evidence of the corner and found nothing. They located the intersection of centerlines of State T.H. 64 and a gravel road east, with a fence west.
- 2004 July, the DNR Land Survey Unit returned to the corner and set a PK nail at the previously located centerline intersection marking the obliterated position of the corner.
- 2018 A Certificate of Survey and field notes, completed and compiled by Northern Engineering and Consulting, shows the corner to be a magnetic tone at the centerline intersection of State T.H. 64 and a gravel road east.
- 2025 March, the DNR Land Survey Unit conducted a search for the corner but found no original evidence. A GPS position was taken at the centerline intersection of T.H. 64 and a gravel road east and it was found to check well with the position located by NECI in 2018. However, no magnetic tone was present. Trunk Highway 64 has been rebuilt since the NECI crew was on site, so the magnetic tone, presumably the PK Nail from the 2004 DNR survey, was destroyed in construction. The position at the centerline intersection was found to measure:

5227.84 feet (GLO = 5296.50 ft) from the NE Corner Section 9
5218.87 feet (GLO = 5260.20 ft) from the NE Corner Section 3

Analysis of the available information led me to accept the centerline intersection as the obliterated position of the corner. It agrees with record GLO distances (within reason), subsequent surveys, and long-standing lines of occupation.

