



A000711020

OFFICE OF THE COUNTY RECORDER
CASS COUNTY, MINNESOTA
CERTIFIED, FILED, AND/OR
RECORDED ON

5/2/2025 10:49:48 AM

AS DOC #: A000711020

PAGES: 2

REC FEES: 0.00

BY SW Dep TX#: 203504

I hereby certify that this survey, plan, or
report was prepared by me or under
my direct supervision and that I am a duly
Licensed Land Surveyor under the laws of
the state of Minnesota.

Daniel J. McAninch
Daniel J. McAninch Date *May 1, 2025*
MN LIC.# 25684

CERTIFICATE OF LOCATION OF GOVERNMENT CORNER

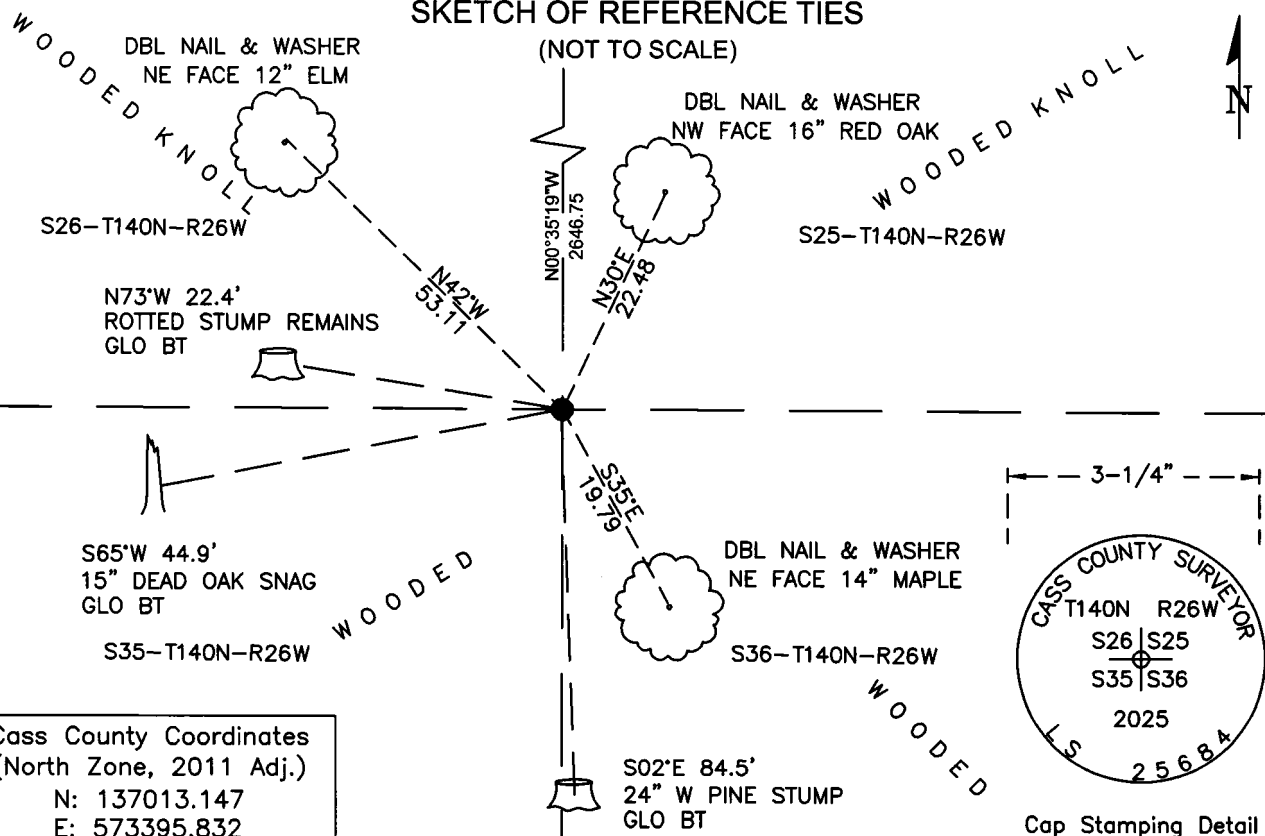
NORTHEAST Corner of Section 35, Township 140, Range 26, W 5th
County of Cass, State of Minnesota

At the corner location shown on the sketch:

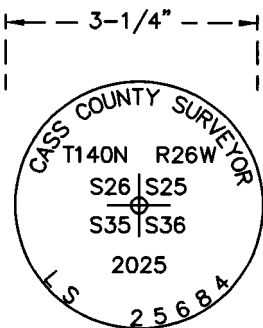
- ☒ On April 24, 2025 found three tree stumps agreeing with 1872 GLO bearing tree ties
yielding a corner location within 20 feet of double proportion position.
☐ left monument as found ☐ lowered monument ☐ removed monument (explain)
- ☒ On April 24, 2025 set a 1" diameter by 30" long magnetized aluminum pipe
with a 3-1/4" diameter stamped aluminum cap from bearing tree remains.

SKETCH OF REFERENCE TIES

(NOT TO SCALE)



Cass County Coordinates
(North Zone, 2011 Adj.)
N: 137013.147
E: 573395.832



Cap Stamping Detail

STATEMENT OF EVIDENCE: **NORTHEAST CORNER OF SECTION 35,
TOWNSHIP 140 NORTH, RANGE 26 WEST,
CASS COUNTY, MINNESOTA**

- 1871** The original public land survey was conducted by a General Land Office crew under William P. Putname and Edgar P. Putnam. They set a wood post to mark the corner. The bearing trees were marked and measured. Copies on file in the Cass County Highway Department/Surveyors office. (CCHD/SO).

8" W Oak	S68dW	68 inks (44.9')
8" W Oak	N73dW	34 links (22.4')
26" W. Pine	S02dE	128 links (84.5')

- 2025** A Cass County survey crew computed a search position for this corner using a double proration to corners approximately one mile away in cardinal directions. A White Pine Stump, a dead Oak snag and a rottted stump remains were found that agreed with the 1871 GLO notes and near the search position. A new corner position was computed using the BT remains and a monument was set there at what has been accepted as the original location.

General Land Office Information on file in the MN historical Society, St. Paul MN. Copies on file in the Cass County Highway Department/Surveyors Office (CCHD/SO).

CASS COUNTY COORDINATES (NAD 83 2011 ADJUSTMENT)

N- 137013.147

E- 573395.832

For additional information contact:
Cass County Highway Department
County Surveyor's Office
8045 County Road 12
Walker, MN 56484
218-547-1211