



A000711022

OFFICE OF THE COUNTY RECORDER
CASS COUNTY, MINNESOTA
CERTIFIED, FILED, AND/OR
RECORDED ON

5/2/2025 10:49:50 AM

AS DOC #: A000711022

PAGES: 2

REC FEES: 0.00

BY SW _____ Dep TX#: 203504

I hereby certify that this survey, plan, or report was prepared by me or under my direct supervision and that I am a duly Licensed Land Surveyor under the laws of the state of Minnesota.

Daniel J. McAninch
Daniel J. McAninch Date May 1, 2025
MN LIC.# 25684

CERTIFICATE OF LOCATION OF GOVERNMENT CORNER

EAST QUARTER Corner of Section 35, Township 140, Range 26, W 5th
County of Cass, State of Minnesota

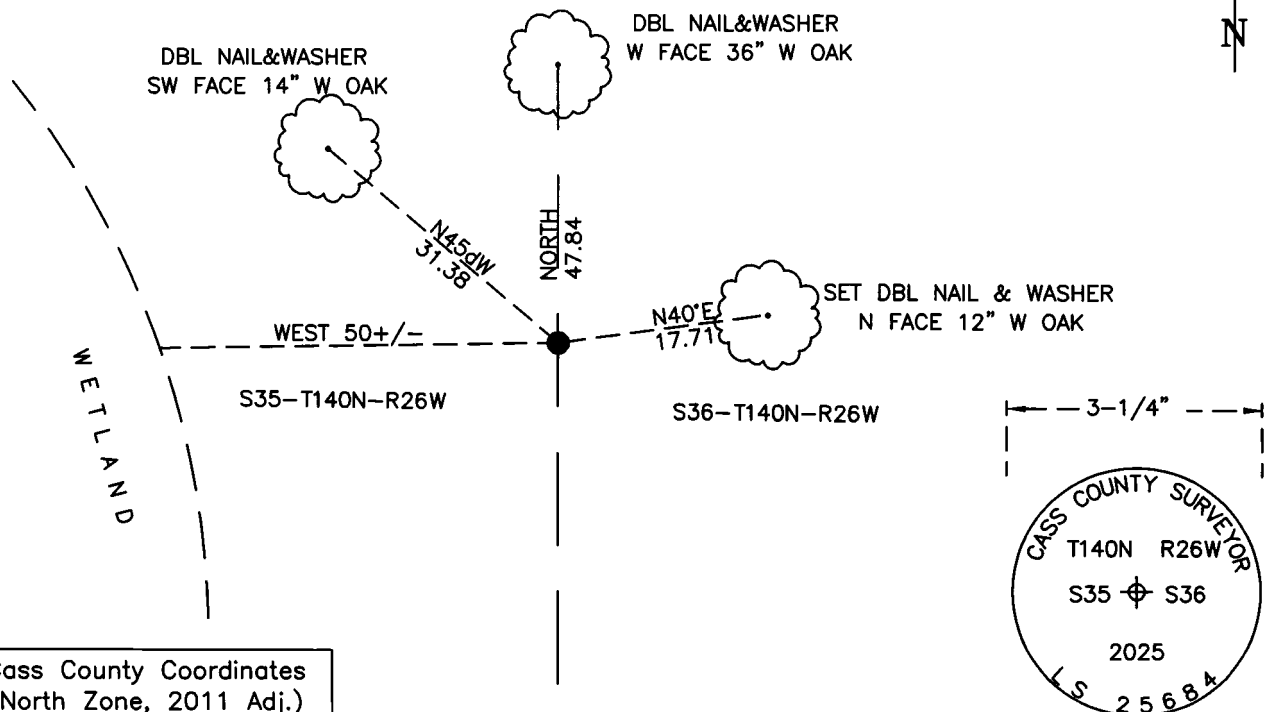
At the corner location shown on the sketch:

☐ On _____ found _____

☐ left monument as found ☐ lowered monument ☐ removed monument (explain)

☒ On April 24, 2025 set 1" diameter by 30" long capped aluminum pipe midway online
the northeast and southeast corners of Section 35.

SKETCH OF REFERENCE TIES (NOT TO SCALE)



Cass County Coordinates
(North Zone, 2011 Adj.)
N: 134369.866
E: 568063.506

Cap Stamping Detail

STATEMENT OF EVIDENCE: EAST QUARTER CORNER OF SECTION 35,
TOWNSHIP 140 NORTH, RANGE 26 WEST,
CASS COUNTY, MINNESOTA

- 1871** The original public land survey was conducted by a General Land Office crew under William P. Putname and Edgar P. Putnam. They set a wood post to mark the corner. The bearing trees were marked and measured. Copies on file in the Cass County Highway Department/Surveyors office. (CCHD/SO).

14" Tamarac	S18dW	67 inks (44.2')
8" Birch	N74dE	55 links (36.3')

- 2025** A Cass County survey crew conducted a thorough search for evidence of original bearing trees. Not finding any verifiable physical evidence the corner was monumented at a "lost" position, midway on the East line of Section 35 between established corners.

General Land Office Information on file in the MN historical Society, St. Paul MN. Copies on file in the Cass County Highway Department/Surveyors Office (CCHD/SO).

CASS COUNTY COORDINATES (NAD 83 2011 ADJUSTMENT)

N- 134369.866

E- 573372.258

For additional information contact:
Cass County Highway Department
County Surveyor's Office
8045 County Road 12
Walker, MN 56484
218-547-1211