



A000710549

OFFICE OF THE COUNTY RECORDER
CASS COUNTY, MINNESOTA
CERTIFIED, FILED, AND/OR
RECORDED ON

4/15/2025 10:03:57 AM

AS DOC #: A000710549

PAGES: 2

REC FEES: 0.00

BY SW _____ Dep TX#: 203085

I hereby certify that this survey, plan, or
report was prepared by me or under
my direct supervision and that I am a duly
Licensed Land Surveyor under the laws of
the state of Minnesota.

Daniel J. McAninch 14 April 2025
Daniel J. McAninch Date
MN LIC.# 25684

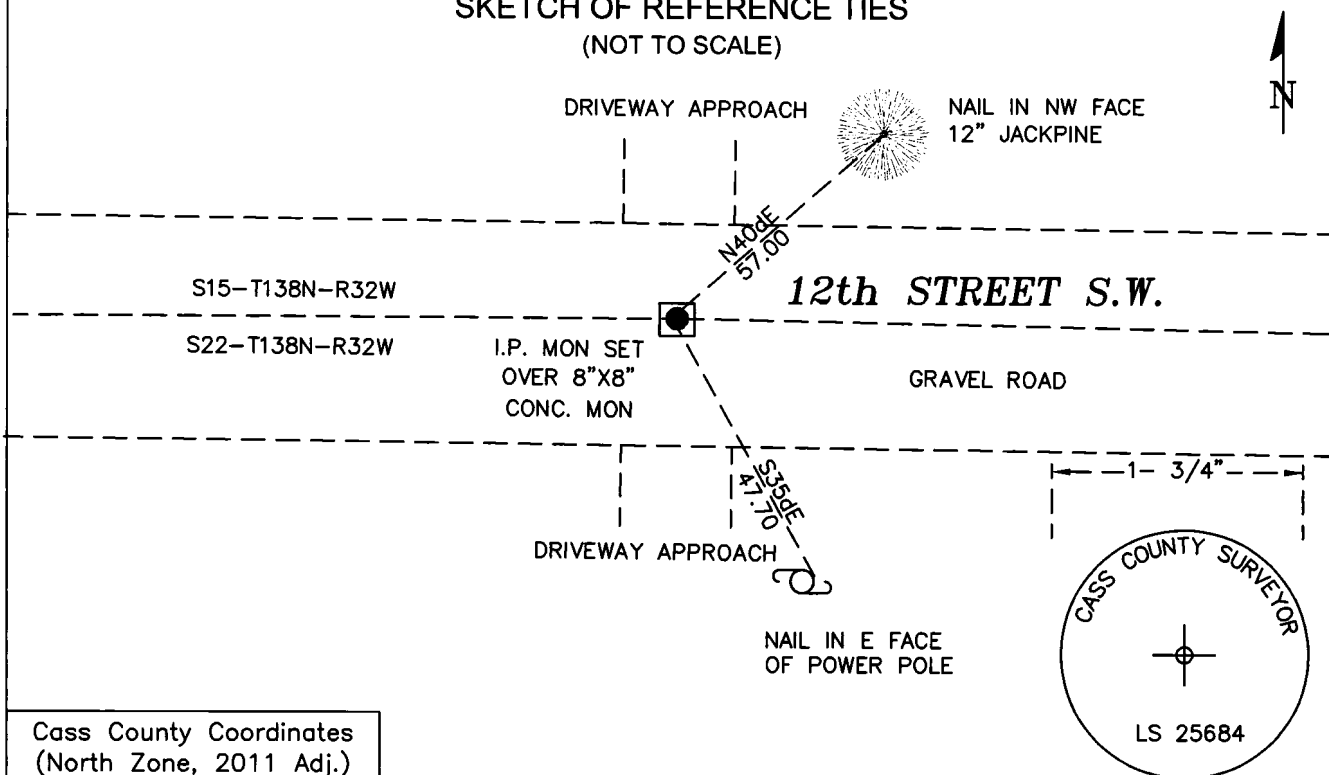
CERTIFICATE OF LOCATION OF GOVERNMENT CORNER

North 1/4 Corner of Section 22, Township 138 N, Range 32,W P.M. 5th
County of Cass, State of Minnesota

At the corner location shown on the sketch:

- ☒ On Sept. 19, 2024 found the top of an 8" x 8" concrete monument 2.2 feet below
the gravel road surface.
- ☒ left monument as found ☐ lowered monument ☐ removed monument (explain)
- ☐ On Sept. 19, 2024 set a 1/2" diameter by 18" iron pipe w 1-3/4" aluminum cap.
above the concrete monument and pulled the other pipe.

SKETCH OF REFERENCE TIES (NOT TO SCALE)



Cass County Coordinates
(North Zone, 2011 Adj.)
N: 438,237.535
E: 320344.628

Cap Stamping Detail

STATEMENT OF EVIDENCE: NORTH QUARTER CORNER OF SECTION 22,
TOWNSHIP 138 NORTH, RANGE 32WEST,
MCKINLEY TWP., CASS COUNTY, MINNESOTA

- 1870** The original public land survey set a wood post was set to mark the corner. The bearing trees were marked and measured to. Copies on file in the Cass County Highway Department/Surveyors office. (CCHD/SO).

12" Norway Pine	S68dW	73 links (48.2')
14" Norway Pine	N49dE	5.62 links (3.7')

- 1912** In 1912 John Curo conducted a survey in the area. In his field notes he indicates the crew set a 8"x8"x16" cement post at the position of this corner. (CCSO Survey Book A, Page 408-414 and Curo Book 98, Page 103 and 106)
- 2020** In September, 2020 a Northwestern Surveying and Engineering crew searched for evidence of this corner including excavation. They ended up setting a ½" diameter iron pipe with a plastic cap stamped " STANG 52591" using the 1912 Curo notes, in what would be an "obliterated" position.(See Doc A000667189)
- 2022** A Cass County survey crew had been conducting a corner recovery project in McKinley Township in an attempt to find multiple Curo cement monuments that appeared in historic records. Having had some success with recovering cement monuments, they re-excavated the gravel road in the area of this corner and recovered the 1912 cement monument set by Curo, 2.2 feet down and 1.94 feet northerly of the previously certified pipe. Having found stronger evidence, they removed the previously certified pipe and notified Mike Stang, RLS 52591 of their findings. (See CCSO Proj. 2022-023 and T138N R32W file)

General Land Office Information on file in the MN historical Society, St. Paul MN. Copies on file in the Cass County Highway Department/Surveyors Office (CCHD/SO).

CASS COUNTY COORDINATES (NAD 83 2011 ADJUSTMENT)
N-438237.535
E-320344.628

For additional information contact:
Cass County Highway Department
County Surveyor's Office
8045 County Road 12
Walker, MN 56484
218-547-1211