

A000684863

**OFFICE OF THE COUNTY RECORDER
CASS COUNTY, MINNESOTA
CERTIFIED, FILED, AND/OR
RECORDED ON**

6/7/2022 10:31:09 AM

AS DOC #: A000684863

PAGES: 2

REC FEES: 0.00

KATHRYN M. NORBY
CASS COUNTY RECORDER

BY SF Dep TX#: 181864

Index No.S.4-21.0

CERTIFICATE OF LOCATION OF
GOVERNMENT CORNER

I hereby certify that this survey, plan, or report was prepared by me or under my direct supervision and that I am a duly Registered Land Surveyor under the laws of the State of Minnesota.

~~Corey J. Hendershott~~

Date: May 20, 2022 License No: 45353

Witness Corner to Meander Corner #3 of Sections 25 & 26, South side of
WILSON LAKE, Township 142 North, Range 26 West of the 5th Principal Meridian.
County of Cass, STATE OF MINNESOTA.

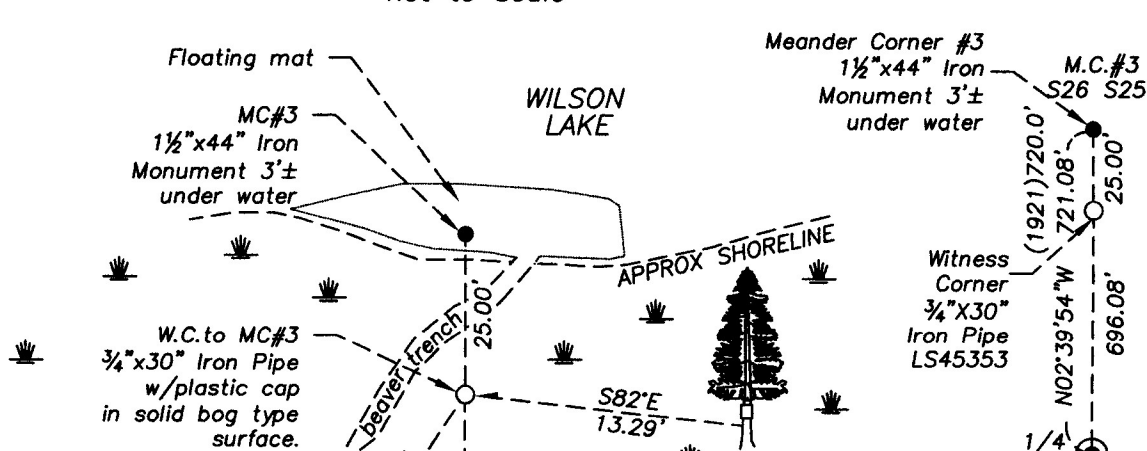
☒ On May 14, 2022 I Corey Hendershott searched for and recovered the 1921 1½x44" Iron Monument set from Gov't Tamarack stump to the NW. Monumnet was leaning heavily rusted under a floating mat, 3' under water. Monument was found to be near a calculated position based upon the 1921 Resurvey of Section 26 measurements.

☒ left monument as found; ☐ lowered monument; ☐ removed monuments (explain)

☒ On May 14, 2022 a ¾"x30" Iron Pipe with plastic cap, LS45353 was set on-line 25.00 feet southerly between recovered 1½"l.P. and East Quarter of Section 26.

decl: 1° EAST

SKETCH OF REFERENCE TIES
not to scale



Index No. S.4-21.0

Statement of Evidence

Witness Corner to Meander Corner #3 of Sections 25-26, Township 142 North, Range 26 West, 5th Principal Meridian.

Oct. 1872 Hayward and Griffin, General Land Office (GLO) Deputy Surveyors, in the notes of the subdivision of Township 142 North, Range 26 West, set a post for the original corner and referenced it as follows:

Tamarack,	4",	N45W,	5 lks,	3.30 feet;
Tamarack,	4",	S40E,	5 lks,	3.30 feet:

May 1914 Government Land Office, A survey of Two Islands in WILSON'S and KNIGHT'S LAKES, respectively in SECS. 24 AND 13, T. 142 N., R. 26 W. Perform by Francis W. DuBois and Francis F. McKinney, U.S. Transitlemen. The notes state that both original bearing were identified and a 4'x 4" square White Cedar post was Set 30 inches in the ground being Muskeg type surface. They noted no living trees for marking.

Gov't,	Tamarack,	4",	N45W,	5 lks,	3.30 feet;
Gov't,	Tamarack,	4",	S40E,	5 lks,	3.30 feet:

April 1921 James Flynn, Cass County Surveyor, Plat of Survey of Section 26 "B33". This drawing shows a recovered Government Corner at this position, being 720.0 feet north of the East Quarter Corner of Section 26. It shows no angle break at through said East Quarter Corner coming from the southeast corner of Section 26. The notes for this survey can be found in County Book "C", page 415. A 1½"x44" Iron Monument was set from the recovered Gov't 5" Tamarack, which is now a stump at N45W @ 3'3". A new witness was established as follows

Gov't,	Tamarack stump,	5",	N45W,	3 feet 3 inches;
1921,	Tamarack,	5",	N58W,	49.0 feet:

May 2022 C.J. Hendershott, LS 45353, For a Certificate of Survey for Greg Scollard, on file in the CCHD/SO, recovered the 1½" Iron Pipe under a floating mat, 3' under water rusting away. A ¾" x30" iron pipe with cap LS45353 set on-line southerly 25.00 feet between the recovered 1½" Iron Monument representing the Meander Corner # 3 and the Quarter Corner common to Sections 25 & 26 for a Witness Corner to the Meander Corner. New witnesses for the Witness Corner are as follows:

2022,	Tamarack,	3½",	S82E,	13.29 feet,	60d/spike and TAG;
2022,	Tamarack,	7",	S33W,	42.32 feet;	60d/spike and TAG:

Analysis of the recovered record data, field evidence and survey measurements, indicates that the 1½" Iron Monument recovered is a direct perpetuation of the Government position of Meander Corner # 3.

Witness Corner to Meander Corner #3
County Coordinates (Cass County North)
Northing 203577.249
Easting 572862.373

Meander Corner
County Coordinates (Cass County North)
Northing 203602.222
Easting 572861.211