



A000709183

OFFICE OF THE COUNTY RECORDER
CASS COUNTY, MINNESOTA
CERTIFIED, FILED, AND/OR
RECORDED ON

2/7/2025 10:04:05 AM

AS DOC #: A000709183

PAGES: 2

REC FEES: 0.00

BY SW _____ Dep TX#: 201885

I hereby certify that this survey, plan, or
report was prepared by me or under
my direct supervision and that I am a duly
Licensed Land Surveyor under the laws of
the state of Minnesota.

Daniel J. McAninch 6 Feb. 2025

Daniel J. McAninch Date
Cass County Surveyor
MN. L.S. 25684

CERTIFICATE OF LOCATION OF GOVERNMENT CORNER

Northeast Corner of Section 22, Township 140 N, Range 30 W, 5th P.M. 5th
County of Cass, State of Minnesota

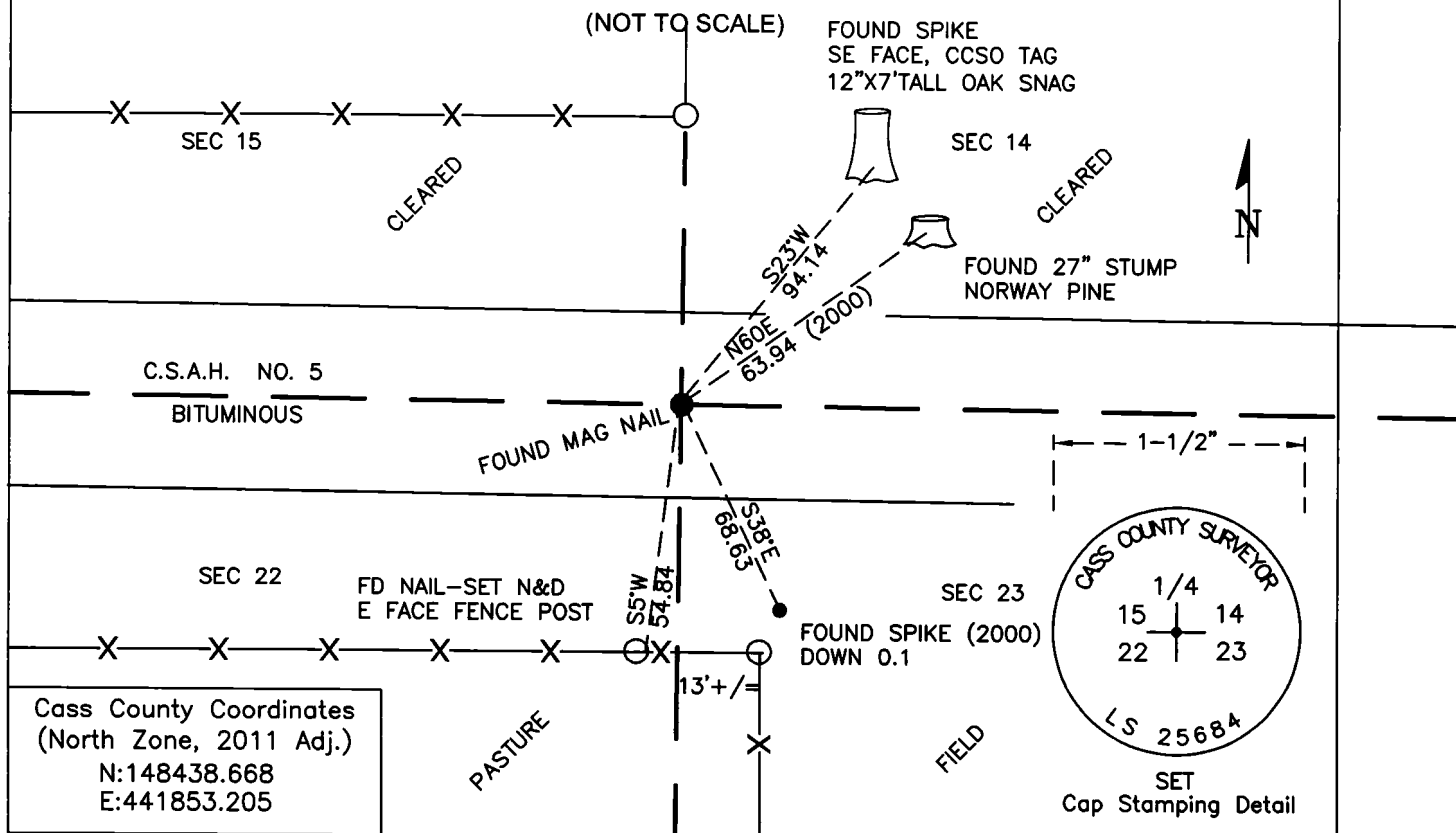
At the corner location shown on the sketch:

☒ On Aug, 2022 found Mag nail 1 foot North of centerline.

☒ left monument as found ☐ lowered monument ☐ removed monument (explain)

On October 3, 2024 set 1/2" diameter by 18"lon iron pipe, 1-1/2" alum. cap
stamped as shown.

SKETCH OF REFERENCE TIES



Cass County Coordinates
(North Zone, 2011 Adj.)
N:148438.668
E:441853.205

STATEMENT OF EVIDENCE:

NORTHEAST CORNER SECTION 22,
TOWNSHIP 140 NORTH, RANGE 30 WEST,
CASS COUNTY, MINNESOTA

- 1865** The original public land survey was completed under George Wright and Thomas Walker and a wood post was set to mark the corner along with the following bearing ties.
- | | |
|--------------------------|----------------------|
| 24" Norway Pine N9dE | 32 links (211.2 ft) |
| 12" Norway Pine S15dW | 70 links (46.2 ft) |
| 30" Norway Pine N62d30'W | 222 links (146.5 ft) |
- 1907** John Curo found the stumps of the old government bearing trees and set a wood stake at the corner location.(Cass Svy Book B, Page 433-431)
- 1913** John Curo found all the old bearing trees and set a 2-1/2" diameter by 48" long iron pipe which fell near the South wheel track of the primitive road.(Book 99, Pg 110)
- 1919** E.B. Horst found an iron monument at this corner. (Cass Svy Book C, Page 203)
- 1939** County Surveyor, John Curo, found a 2-1/2 " dia by 48" long iron pipe with cap set from bearing trees. (Cass Svy Book D, Page 196)
- | | |
|--------------------------|-----------|
| 12" Norway Pine N56d40'E | 63.84 ft |
| 12" Norway Pine S56d40'E | 70.75 ft |
| 26" White Pine S82d12'E | 225.05 ft |
- 1960** Cass County highway alignment notes and plans indicate a 2-1/2" diameter iron pipe in place.
- 1998** A Cass County Highway Department survey crew found a capped iron pipe at this corner (Cass Proj. 98-008)
- | | |
|-----------------------|---------------------|
| 18" Norway Pine N53dE | 63.94 ft (1939 tie) |
| 1/2 " Rod S37dE | 68.63 ft |
| Fence Post South | 54.84 ft |
| Power Pole N52dW | 110.46 ft |
- 2000** A Cass County crew revisited the corner and set a Mag nail using the 98 ties and data. The corner fell 2.7 feet North of centerline and 13 feet westerly of a fence to the South.. A sign was also set 50 feet North of the corner.(Cass Proj. 98-008)
- 2022** In preparation for a paving project a Cass County survey crew found a mag nail fitting the 2000 ties with a deep ring below it. This position was accepted as the correct location for the corner.
- 2024** A Cass County crew reset the corner with a 1/2" diameter iron pipe and 1-1/2" diameter aluminum stamped cap. See page 1 for details. This history for this location has been determined to be a perpetuation of the original GLO location.

Information on file in the MN historical Society, St. Paul MN. Copies on file in the Cass County Highway Department/Surveyors Office (CCHD/SO).

Cass County Coordinates (North Zone)**N:148438.668****E:441853.205**

For additional information contact:

Cass County Surveyor's Office

8045 County Road 12

Walker, MN 56484

218-547-1211