



A000709459

OFFICE OF THE COUNTY RECORDER
CASS COUNTY, MINNESOTA
CERTIFIED, FILED, AND/OR
RECORDED ON

2/20/2025 1:44:59 PM

AS DOC #: A000709459

PAGES: 2

REC FEES: 0.00

BY SW _____ Dep TX#: 202123

I hereby certify that this survey, plan, or report was prepared by me or under my direct supervision and that I am a duly Licensed Land Surveyor under the laws of the state of Minnesota.

Daniel J. McAninch 20 Feb. 2025

Daniel J. McAninch Date

MN LIC. #25684

CERTIFICATE OF LOCATION OF GOVERNMENT CORNER

CENTER of Section 25, Township 139 N., Range 28 W., 5th P.M.

County of Cass, State of Minnesota

At the corner location shown on the sketch:

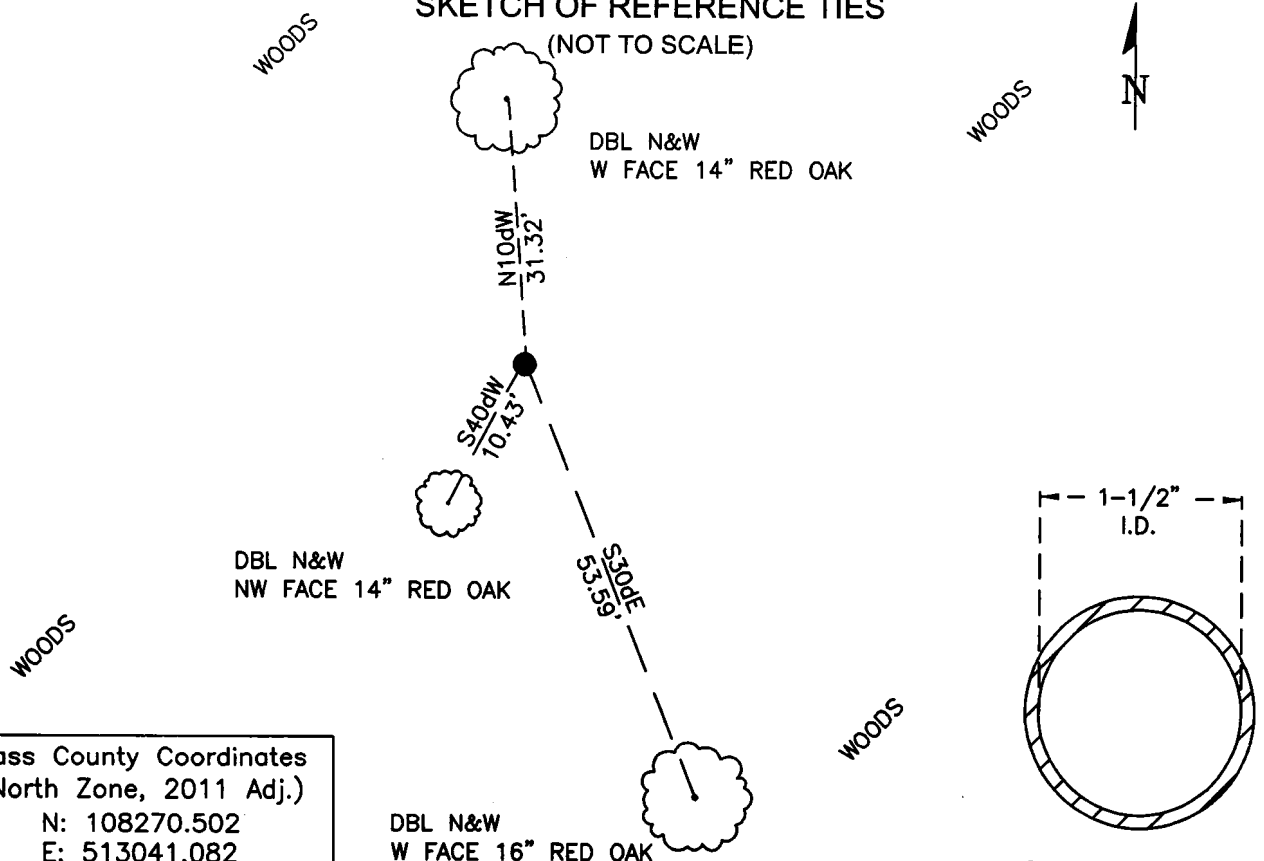
☒ On September 9, 2024 found 1-1/2" diameter iron pipe, 2.0 feet up

☒ left monument as found ☐ lowered monument ☐ removed monument (explain)

☐ On _____ set _____

SKETCH OF REFERENCE TIES

(NOT TO SCALE)



Cass County Coordinates
(North Zone, 2011 Adj.)

N: 108270.502

E: 513041.082

STATEMENT OF EVIDENCE:

CENTER OF SECTION 1,
TOWNSHIP 139 NORTH, RANGE 28 WEST,
CASS COUNTY, MINNESOTA

- 1920** County Surveyor, James H. Flynn under a contract dated June 4, 1918 and Deputy County Surveyor, Ben F. Clark, under his contract dated May 26, 1919 set a monument at the center of Section 1. (Plat No. 1 in T 139 N, R28 W, 5th P.M. – Doc. 69793, recorded March 3, 1922)
- 2024** A Cass County survey crew recovered a 1-1/2 inch diameter iron pipe protruding 2.5 feet above the ground. This pipe was accepted as the one set in 1921 by the County Surveyor. As the monument was witnessed by local land owners, it is accepted as the physical location of the corner.

CASS COUNTY COORDINATES (NAD 83 2011 ADJUSTMENT, NORTH ZONE)
N-129253.533
E-513165.928

General Land Office Information on file in the MN historical Society, St. Paul MN. Copies on file in the Cass County Highway Department/Surveyors Office (CCHD/SO).

For additional information contact:
Cass County Highway Department
County Surveyor's Office
8045 County Road 12
Walker, MN 56484
218-547-1211