



A000710909

OFFICE OF THE COUNTY RECORDER
CASS COUNTY, MINNESOTA
CERTIFIED, FILED, AND/OR
RECORDED ON

4/29/2025 10:11:02 AM

AS DOC #: A000710909

PAGES: 2

REC FEES: 0.00

BY BA Dep TX#: 203405

I hereby certify that this survey, plan, or report was prepared by me or under my direct supervision and that I am a duly Licensed Land Surveyor under the laws of the state of Minnesota.

Daniel J. McAninch 4/28/25
Daniel J. McAninch Date
Cass Co. Surveyor MN License 25684

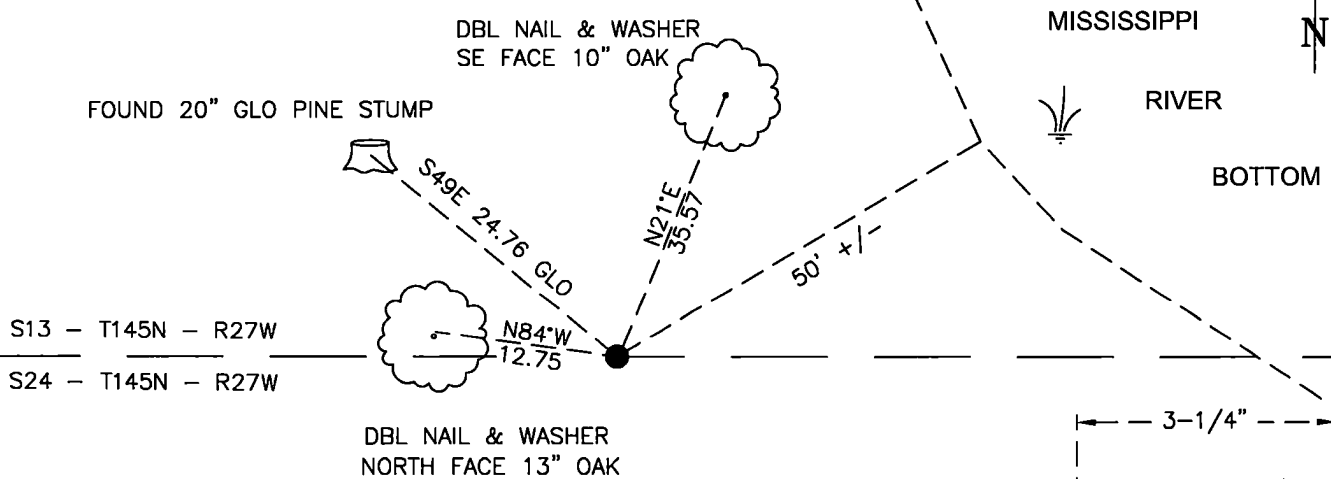
Guy T. Carlson 4/24/2025
Guy Carlson Date
Itasca Co. Surveyor MN License 40991

CERTIFICATE OF LOCATION OF GOVERNMENT CORNER

Meander Corner 11 of Sections 13&24, Township 145, Range 27 W P.M. 5th
County of Cass, State of Minnesota

At the corner location shown on the sketch:

- ☒ On April 16, 2025 found a 20" pine stump of original bearing tree, agreeing with the U.S. Army Corps of Engineers survey recovery location
- ☒ left monument as found ☐ lowered monument ☐ removed monument (explain)
- ☒ On April 16, 2025 set a 1" diameter by 30" aluminum monument with a stamped 3-1/4" aluminum cap at GLO record bearing and distance from the stump.

SKETCH OF REFERENCE TIES
(NOT TO SCALE)

S13 - T145N - R27W

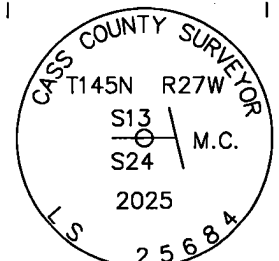
S24 - T145N - R27W

DBL NAIL & WASHER
NORTH FACE 13" OAK

Cass County Coordinates
(North Zone, 2011 Adj.)

N: 306397.517

E: 542834.044



Cap Stamping Detail

STATEMENT OF EVIDENCE: MEANDER CORNER 11 OF SECTIONS 13 AND 24,
TOWNSHIP 145 NORTH, RANGE 27 WEST,
CASS COUNTY, MINNESOTA

1870 The original public land survey set a wood post was set to mark the corner. The bearing trees were marked and measured to. Copies on file in the Cass County Highway Department/Surveyors office. (CCHD/SO).

18" Norway Pine	N49dW	36 links (24.8')
6" Poplar	S19dW	57 links (37.6')

1900 (January) United States Army Corps of Engineering personnel H.F. Pfund recovered both original bearing trees. A.C.O.E. Field Book A1-293, page 17.

1900 (January) United States Army Corps of Engineering personnel C.A. Swift while surveying the Upper Mississippi River Reservoir System, tied the original Norway Pine witness into his traverse. A.C.O.E. Field Book A1-253, page 5.

NOTE In 2012, the notes for the survey of the Upper Mississippi River Reservoir System were acquired by Itasca County from the Corps of Engineer's office in St. Paul and at the National Archives in Chicago, Ill. After years of data entry into a least squares adjustment program, and the extensive efforts of recovering the remaining survey control, calculated positions were established for the hundreds of Public Land Survey System corners that the A.C.O.E. tied into during their surveys.

2019 (October) Itasca County personnel navigated to a calculated position based on the 1900 survey notes. At this location they recovered the remains of a 20" pine stump that fit the 1900 recovery. Geodetic coordinates were established on the stump. Its position is 8.49 feet from the calculated position. Township Field Book 1, page 6.

2025 A Cass County survey crew utilized a the 20" pine bearing tree stump located by the Itasca County crew to establish and monument the corner at the GLO record bearing and distance from the identified 20" diameter Pine stump.

General Land Office Information on file in the MN historical Society, St. Paul MN. Copies on file in the Cass County Highway Department/Surveyors Office (CCHD/SO).

CASS COUNTY COORDINATES (NAD 83 2011 ADJUSTMENT)

N-306397.517

E-542834.044

For additional information contact:
Cass County Highway Department
County Surveyor's Office
8045 County Road 12
Walker, MN 56484
218-547-1211