



A000710968

OFFICE OF THE COUNTY RECORDER  
CASS COUNTY, MINNESOTA  
CERTIFIED, FILED, AND/OR  
RECORDED ON

5/1/2025 10:08:47 AM

AS DOC #: A000710968

PAGES: 2

REC FEES: 0.00

BY SW Dep TX#: 203461Index No. A-13

## CERTIFICATE OF LOCATION OF GOVERNMENT CORNER

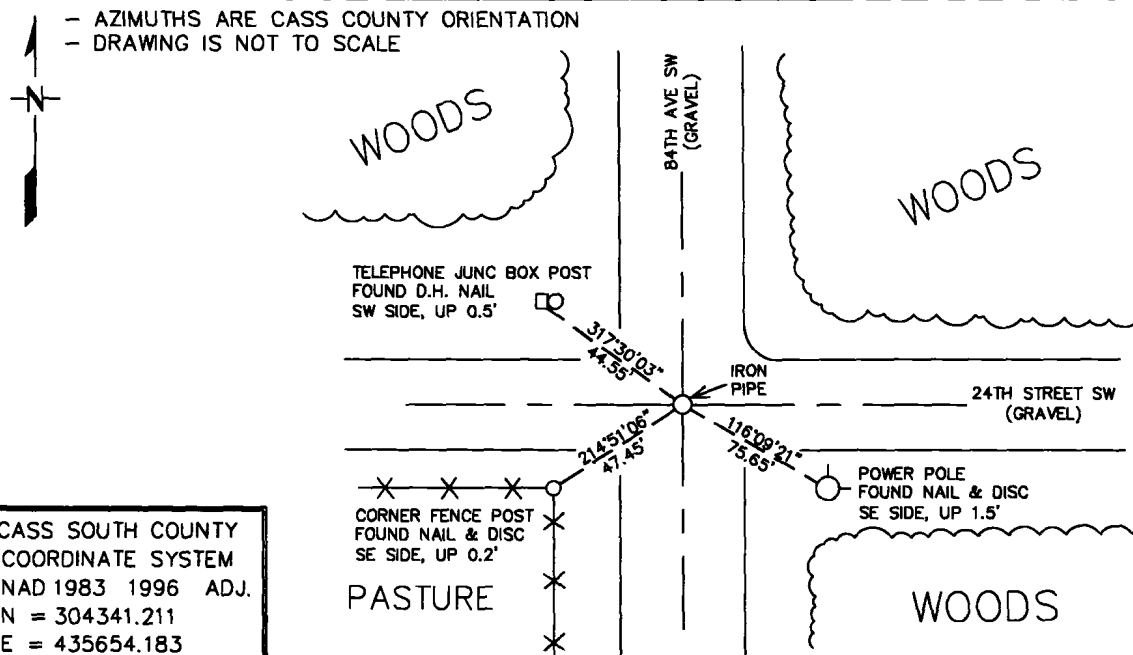
NORTHEAST Corner of Section 4, Township 137N, Range 32W  
5th Principal Meridian, State of Minnesota, County of CASS

At the corner location shown on the sketch:

☒ On 3/13/2025 found a 1/2" IRON PIPE, DOWN 0.3', IN THE INTERSECTION OF  
ROAD CENTERLINES, NORTH-SOUTH AND EAST-WEST.  
☒ left monument as found, ☐ lowered monument, ☐ removed monument (explain)

☐ On DATE Placed a DATE

- AZIMUTHS ARE CASS COUNTY ORIENTATION  
 - DRAWING IS NOT TO SCALE



CASS SOUTH COUNTY  
 COORDINATE SYSTEM  
 NAD 1983 1996 ADJ.  
 N = 304341.211  
 E = 435654.183

Statement of evidence for this corner location is on back of this page.

AMD 4/15/2025  
 SFTXXXXX.00.00.01

I hereby certify that this plan, specification, or report was prepared by me or under my direct supervision and that I am a duly Licensed Land Surveyor under the laws of the State of Minnesota.

SIGNATURE Anthony M. Djonne DATE 4-30-25 License Number 62745  
ANTHONY M. DJONNE

Title: ☒ Land Surveyor ☐ Professional Engineer ☐ County Surveyor ☐ County Engineer

**Northeast Corner Section 4, Township 137 North, Range 32 West, 5<sup>th</sup> Principal Meridian**

The DNR Land Survey Unit contacted the following offices for information regarding this corner:

MN Historical Society  
 MN Department of Transportation (MnDot)  
 Cass County Highway Department  
 Cass County Surveyor (CCSO) and GIS Site  
 Northern Engineering and Consulting (NECI)

- 1870 The US General Land Office field notes, on file in the MN Historical Society, show this corner to be marked with a post and the following bearing trees were marked:

Norway Pine	18"	S28 ½°E	52 Links
Norway Pine	12"	S23°W	87 Links
Pitch Pine	14"	N7 ½°E	44 Links
White Pine	7"	N42°W	95 Links

- 2018 A Certificate of Survey and field notes, completed and compiled by Northern Engineering and Consulting, shows the corner to be a monument with a broken cap, down 1", at the intersection of roads, N-S and E-W.

- 2025 March, the DNR Land Survey Unit searched for evidence of the corner and found an iron pipe with no cap, down 0.30', at the intersection of roads, North-South and East-West. The monument matches the one found and held by NECI in 2018. The iron pipe was found to measure:

5270.20 feet (GLO = 5280 ft) from the NE Corner Section 3  
 5241.07 feet (GLO = 5329.50 ft) from the NE Corner Section 9

Analysis of the available information led me to accept the found iron pipe as the corner. It agrees with record GLO distances (within reason), subsequent surveys, and long-standing lines of occupation.