



A000711018

OFFICE OF THE COUNTY RECORDER  
CASS COUNTY, MINNESOTA  
CERTIFIED, FILED, AND/OR  
RECORDED ON

5/2/2025 10:49:46 AM

AS DOC #: A000711018

PAGES: 3

REC FEES: 0.00

BY SW Dep TX#: 203504

I hereby certify that this survey, plan, or report was prepared by me or under my direct supervision and that I am a duly Licensed Land Surveyor under the laws of the state of Minnesota.

*Daniel J. McAninch*  
Daniel J. McAninch Date  
MN LIC.# 25684

## CERTIFICATE OF LOCATION OF GOVERNMENT CORNER

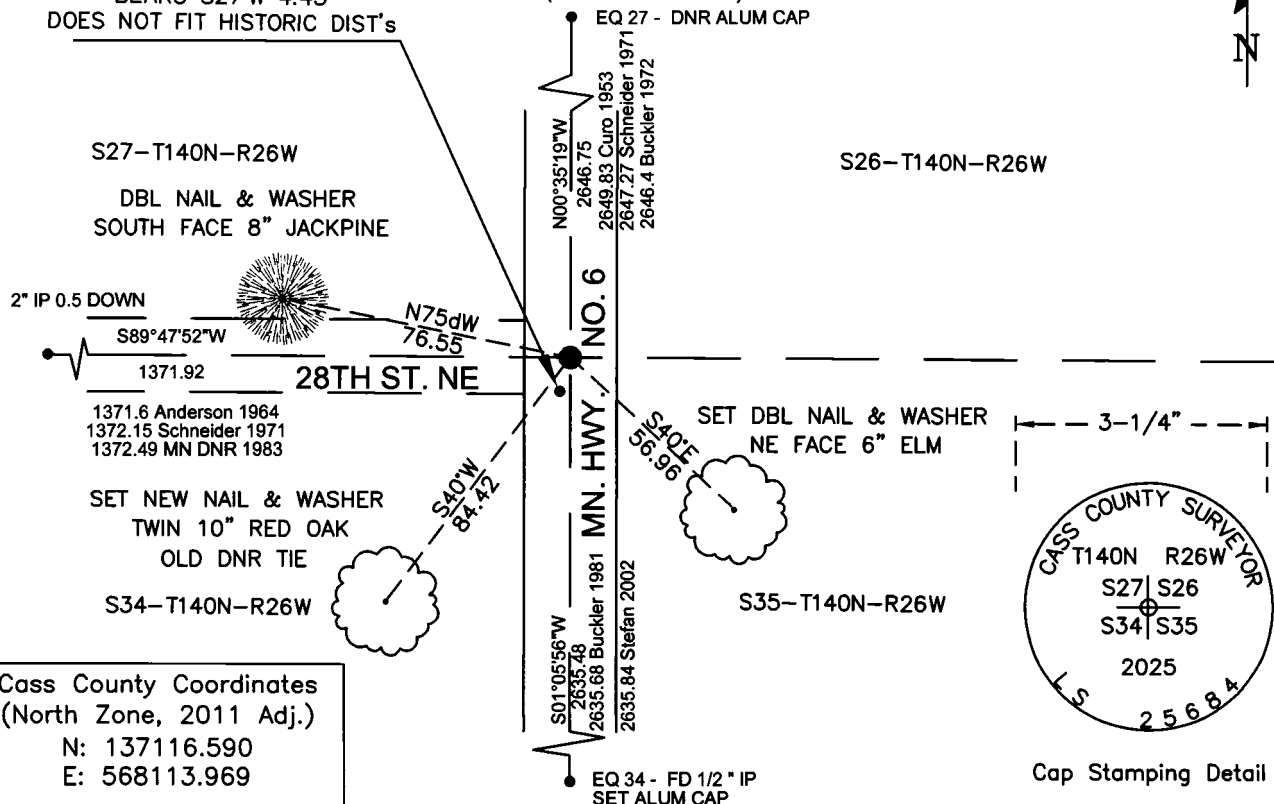
NORTHEAST Corner of Section 34, Township 140, Range 26, W P.M. 5th  
County of Cass, State of Minnesota

At the corner location shown on the sketch:

- ☒ On April 24, 2025 found 1-1/4" diameter iron pin, 0.3 " down near centerline of State Highway No. 6 and a gravel road West. (28th St NE)
- ☒ left monument as found ☐ lowered monument ☐ removed monument (explain)
- ☒ On April 30, 2025 set 3-1/4" stamped aluminum cap on pin.

SOLID PIN CERT. in 1992  
BEARS S27°W 4.45'  
DOES NOT FIT HISTORIC DIST's

### SKETCH OF REFERENCE TIES (NOT TO SCALE)



Cass County Coordinates  
(North Zone, 2011 Adj.)  
N: 137116.590  
E: 568113.969

**STATEMENT OF EVIDENCE:**      **NORTHEAST CORNER OF SECTION 34,  
TOWNSHIP 140 NORTH, RANGE 26 WEST,  
CASS COUNTY, MINNESOTA**

- 1871** The original public land survey was conducted by a General Land Office crew under William P. Allen and Edgar P. Putnam. They set a wood post to mark the corner. The bearing trees were marked and measured. Copies on file in the Cass County Highway Department/Surveyors office. (CCHD/SO).

18" White Pine	S09dE	142 links (93.7')
18" White Pine	S07dW	137 links (90.4')

- Circa 1912** George A. Ralph surveyed State Rural Highway No. 83 and shows a distance of 2646 feet to the quarter corner North. (Cass Survey Book B, Record 256, Page 88)

- 1915** John M. Greene found "old Gov't BT stumps SE and SW. A piece of rack tooth was set.

5" Norway Pine	S05dE	128.8 feet
28" White Pine Stump	S60dW	121.4 feet

- 1953** Curo shows an iron at the section corner North a measured distance of **2649.83** feet to a spike at the East Quarter Corner of Section 27. (Curo Book 239, Page 133)

- 1964** The plat of JOHANNESSEN LOTS by Dean Anderson, L.S., shows this corner in place with a measured distance of 1371.6 feet westerly to the NE corner of Lot 1.

- 1971** R.F. Schneider, RLS, shows a 1-1/2" iron pipe at this corner with a distance of **2647.27** feet to the quarter corner northerly and a distance of **1372.15** feet westerly to a 2" iron pipe in place at the northeast corner of Lot 1, JOHANNESSEN LOTS.

- 1981** Wallace F Buckler conducted a survey of two tracts in the northwest quarter of Section 35 and accepted a monument for this corner and set a monument at a lost position for the East Quarter corner of Section 34 at a distance of **2635.85** feet southerly of the pipe certified on this document. His comp sheet shows a second pipe 2.69 feet southwesterly and a computed highway PI approximately 5.7 feet southwesterly as well. (CCSO Files)

- 1983** John D. Walker, Minnesota Department of Natural Resources found a 1-1/2" diameter pipe and placed a 3/4" iron rod over the pipe. The pipe was certified with Doc. A000343674. However, a second pin was found and measured 4.51 feet northeasterly of the certified corner. That second pin agreed much closer with historical measurements to other PLS corners to the North, West and South. The document made no clear case for why the more southerly pipe was certified. The distances to other PLS monuments, stated in the statement of evidence, support the more northerly pipe. (see Doc. A000343674)

- 2002** Milo E. Stefan surveyed four Tracts of land in the West half of the East half of the Southeast Quarter of the Northeast Quarter of Section 34. He indicated having found a monument at this corner that measured **2635.84** feet from the East Quarter corner of Section 34. (CCSO COS #1748)

- 2005** Terry Freeman of Landecker and Associates show using this corner but mistakenly showing a distance northerly to the East Quarter corner of Section 34 that was approximately 4.5 feet short of other record distances. (CCSO COS #2970)
- 2025** A Cass County survey crew found a 1-1/4" diameter solid iron pin at this location which was verified by measurements to found PLS monuments to the North, West and South. (See entries above and page 1) At this time it was determined that the pin certified by Document A000343674 lying 4.5 feet Southwesterly of this corner was incorrectly accepted in 1983 and certified in 1992. Cass County Surveyor's office will recertify the correct monument. (Cass County Survey Proj. No. 2025-017)

General Land Office Information on file in the MN historical Society, St. Paul MN. Copies on file in the Cass County Highway Department/Surveyors Office (CCHD/SO).

**CASS COUNTY COORDINATES (NAD 83 2011 ADJUSTMENT)**

**N- 37116.590**

**E- 568113.969**

For additional information contact:  
**Cass County Highway Department**  
**County Surveyor's Office**  
8045 County Road 12  
Walker, MN 56484  
218-547-1211