



A000711021

OFFICE OF THE COUNTY RECORDER
CASS COUNTY, MINNESOTA
CERTIFIED, FILED, AND/OR
RECORDED ON

5/2/2025 10:49:49 AM

AS DOC #: A000711021

PAGES: 2

REC FEES: 0.00

BY SW _____ Dep TX#: 203504

I hereby certify that this survey, plan, or
report was prepared by me or under
my direct supervision and that I am a duly
Licensed Land Surveyor under the laws of
the state of Minnesota.

Daniel J. McAninch May 1, 2025
Daniel J. McAninch Date
MN LIC.# 25684

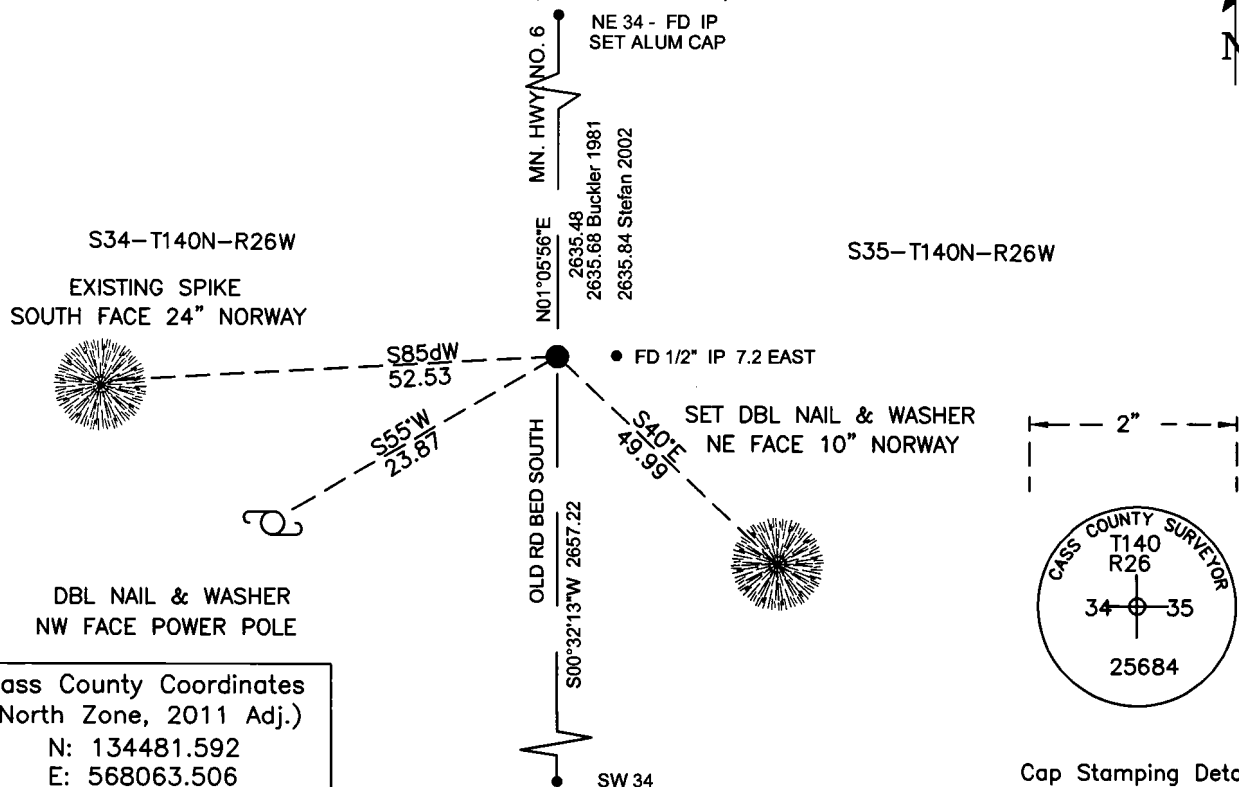
CERTIFICATE OF LOCATION OF GOVERNMENT CORNER

____ East ____ Corner of Section 34, Township 140, Range 26, W ____ P.M. 5th
County of Cass, State of Minnesota

At the corner location shown on the sketch:

- ☒ On April 24, 2025 found 3/4" iron pipe west of highway online with old road bed
running South and on monumented line to the West.
- ☐ left monument as found ☐ lowered monument ☐ removed monument (explain)
- ☒ On April 30, 2025 set 2" aluminum stamped cass county cap on pipe

SKETCH OF REFERENCE TIES (NOT TO SCALE)



STATEMENT OF EVIDENCE: **EAST QUARTER CORNER OF SECTION 34,
TOWNSHIP 140 NORTH, RANGE 26 WEST,
CASS COUNTY, MINNESOTA**

- 1871** The original public land survey was conducted by a General Land Office crew under William P. Allen and Edgar P. Putnam. They set a wood post to mark the corner. The bearing trees were marked and measured. Copies on file in the Cass County Highway Department/Surveyors office. (CCHD/SO).

10" White Oak	S20dW	27 links (17.8')
26" White Pine	S25dE	23 links (15.2')

- 1981** Wallace F Buckler conducted a survey of two tracts in the northwest quarter of Section 35 and set a monument for this corner at a lost position 2635.85 feet southerly of the northwest corner of Section 35. (CCSO Files)
- 2002** Milo E. Stefan surveyed four tracts of land in the West half of the East half of the Southeast Quarter of the Northeast Quarter of Section 34. He indicated having found a monument at this corner that measured 2635.84 feet from the northeast corner of Section 34. (CCSO COS #1748)
- 2005** Terry Freeman of Landecker and Associates show using this corner but mistakenly showing a distance northerly to the northeast corner of Section 34 that was incorrectly certified that distance was approximately 4.5 feet short of other record distances.
- 2017** Two Certificates of survey by Stonemark Land Surveying show a measurement of 2657.77 feet from this corner southerly to the southwest corner of Section 35. (CCSO COS #8412 and #8118)
- 2025** A Cass County survey crew found a 1/2" diameter iron pipe at this location which was verified by monuments set on the South line of the SE 1/4 of the NE 1/4 of Section 34 by Milo Stefan. This position measured 2635.48 feet southerly of an iron pin accepted as the Northeast corner of Section 34. The 3/4" pipe found at this corner was accepted as the perpetuated lost position established by Buckler in 1981. A new Cass County cap was set on the pipe.

General Land Office Information on file in the MN historical Society, St. Paul MN. Copies on file in the Cass County Highway Department/Surveyors Office (CCHD/SO).

CASS COUNTY COORDINATES (NAD 83 2011 ADJUSTMENT)

N- 134481.592

E- 568063.506

For additional information contact:
Cass County Highway Department
County Surveyor's Office
 8045 County Road 12
 Walker, MN 56484
 218-547-1211