



A000711023

Page 1 of 2



A000711023

OFFICE OF THE COUNTY RECORDER  
CASS COUNTY, MINNESOTA  
CERTIFIED, FILED, AND/OR  
RECORDED ON

5/2/2025 10:49:51 AM

AS DOC #: A000711023

PAGES: 2

REC FEES: 0.00

BY SW Dep TX#: 203504

Index No. J.0-25.0

# CERTIFICATE OF LOCATION OF GOVERNMENT CORNER

I hereby certify that this survey, plan, or report was prepared by me or under my direct supervision and that I am a duly Registered Land Surveyor under the laws of the State of Minnesota.

Corey J. Hendershott  
Corey J. Hendershott

Date: 3/13/2025 License No: 45353

Northeast Corner of Section 13, Township 142 North, Range 27 West of the 5th Principal Meridian. County of Cass, STATE OF MINNESOTA.

☒ On September 21, 2023 I searched for Gov't evidence, using record Ditch #5 distance from the NE Corner of Section 12, using the ditch as Longitudinal control, but found no evidence.

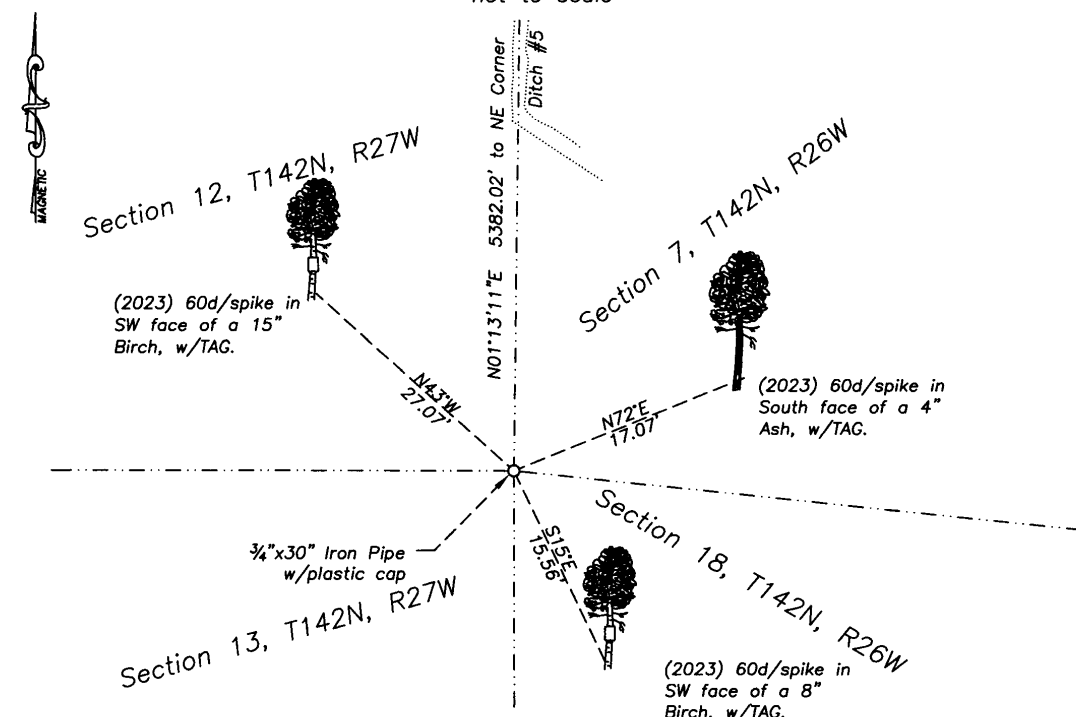
☐ left monument as found; ☐ lowered monument; ☐ removed monuments (explain)

☒ On September 21, 2023, I set a 3/4"x30" Iron Pipe, with plastic cap at calculated position based upon 1916 Ditch #5 survey notes and using the existing ditch to the North as Longitudinal control and record distance as Latitudinal control.

decl: 1" EAST

## SKETCH OF REFERENCE TIES

not to scale



Statement of evidence for this corner position is on the back of this page

## Index No. J.0-25.0

### Statement of Evidence

#### **Northeast Corner of Section 13, Township 142 North, Range 27 West, 5th Principal Meridian.**

July 1872, Hayward & Griffin, General Land Office (GLO) Deputy Surveyors, in the notes of the subdivision of Township 142 North, Range 27 West, set a post for the original corner and referenced it as follows:

5" Spruce	S 23° W	10 links (6.60 feet)
5" Spruce	S 20° E	14 links (9.24 feet)
6" Spruce	N 88° E	16 links (10.56 feet)
5" Spruce	N 13° W	8 links (5.28 feet)

The above records are on file with the Minnesota Historical Society in St. Paul, Minnesota, copies are filed with the Cass County Highway Department, Surveyor's Office (CCHD/SO).

July 1916, Cass County Ditch #5 Survey, Book 7, of Box 2, page 21, by F.F. Wilson. This states at station 0+00 Sit on SW Corner of Section 7, find all BT's, then run line North Var. 7°E. At station 2691 found ¼ post set by Flynn 7°W, station 5382 find NW Corner of Section 7, stands 18' West. "We find NW & SE BT'S stumps.

1963 USFS Corner Books, 14226 Corner Book 2C, page 7. These notes by William Okerman state "Fd. F.S. location poster on Cedar post broken off lying in N. ditch. Measured North from post in ditch and found No evidence. Also noted on this page is information from the Ditch # 5, notes.

2007 Aug., A Private Survey, performed by KLD, signed by James Kramer, LS23668, within Section 7, T142N, R26W For Herbert Gustofson. To perform this survey a calculated position for this corner was established by using the Ditch #5 record distance from the recovered Monument at the NW Corner of said Section 7 while using the existing ditch as Latitudinal control.

Sept. 2023 While performing a private survey within Section 18, Township 142 North, Range 26 West. I Corey Hendershott search for evidence of this corner position at record distance from the NE Corner of Section 12 and using the ditch as Longitudinal control and record distance for Latitudinal control. Nothing was recovered at this position. A ¾"x30" Iron Pipe with plastic cap, was set and witnesses established as shown on the face of this document.

I feel that this position correctly depicts where the Northeast Corner of Section 12, was recovered, based upon the 1916 Ditch #5 running notes.

#### **County Coordinates (Cass County North)**

**Northing 216805.608**

**Easting 546413.656**