



A000711243

OFFICE OF THE COUNTY RECORDER
CASS COUNTY, MINNESOTA
CERTIFIED, FILED, AND/OR
RECORDED ON

5/12/2025 9:55:51 AM

AS DOC #: A000711243

PAGES: 2

REC FEES: 0.00

BY BA Dep TX#: 203694

Index No. E.0-6.6

CERTIFICATE OF LOCATION OF GOVERNMENT CORNER

W.C. to MEANDER Corner of Section 8, Township 140 N, Range 27 W, 5th P.M.
County of Cass, State of Minnesota

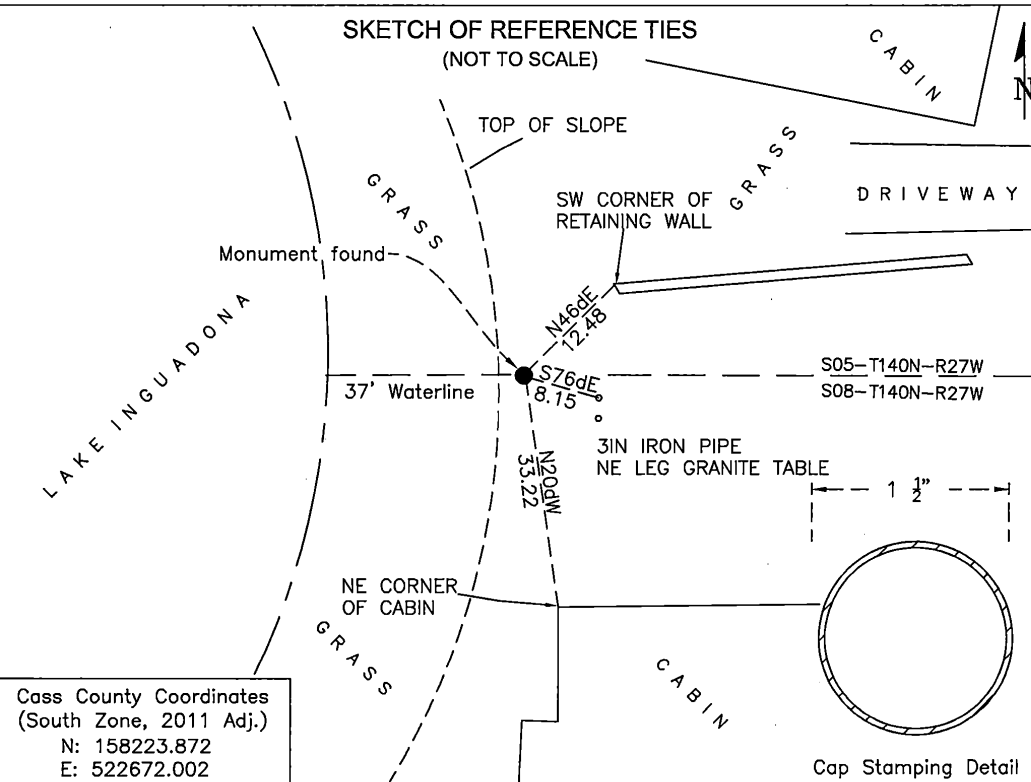
At the corner location shown on the sketch:

☒ On 7/11/23 found 1-1/2" IRON PIPE DOWN 0.4 FEET

☐ left monument as found ☐ lowered monument ☐ removed monument (explain)

☐ On _____ set _____

SKETCH OF REFERENCE TIES (NOT TO SCALE)



Cass County Coordinates
(South Zone, 2011 Adj.)
N: 158223.872
E: 522672.002

Statement of evidence relative to this corner location is on the back of this page

I hereby certify that this survey, plan, or report was prepared by me or under my direct supervision and that I am a duly Licensed Land Surveyor under the laws of the state of Minnesota.

Daniel J. McAninch
Daniel J. McAninch
Cass County Surveyor
MN License No. 25684

9 May 2025
Date

STATEMENT OF EVIDENCE:

WITNESS TO MEANDER CORNER #22 OF SECTION 8,
TOWNSHIP 140 NORTH, RANGE 27 WEST,
(INGUADONA) CASS COUNTY, MINNESOTA

- 1873** During the original subdivision survey of this township a wood post was set, by a GLO crew under Findall G. Winston, to mark the corner. The bearing ties (BT) were established copies are on file in the Cass County Highway Department/Surveyors office. (CCHD/SO).

12" Elm	S49d50E	12 links (7.92')
10" Cedar	N5dE	15 links (9.89')

- 1949** John Curo set an Iron Pipe Monument 55' from the edge of water and 405 feet from N ¼ of section 8. The survey was for Birchwood Shores's Plat in Government lot 1. (Curo Book 243 pg. 121)
- 1966** Spain completed a breakdown and plat of Government Lot 1 T142 R27 Section 7. Spain shows a found monument at the Witness Corner to the Meander Corner.
- 1975** Walt Curo shows a found Iron Pipe at the Witness Corner Meander Corner (WCMC) while breaking down Government Lot 1.
- 2002** Blethen P. Shows a found monument in a Certificate of Survey for T140 R27 North Quarter of section 8 for the breakdown of Government Lot 2.
- 2023** CCSO recovered a 1 ¼ inch Iron Pipe at the top of slope 0.4 feet below the surface. The monument was located at the top of the slope in the mowed yard. It is accepted as the WCMC of Meander Corner 22.

CASS COUNTY COORDINATES (NAD 83 2011 ADJUSTMENT)**N-158223.872****E-522672.002**

General Land Office Information on file in the MN historical Society, St. Paul MN. Copies on file in the Cass County Highway Department/Surveyors Office (CCHD/SO).

For additional information contact:
Cass County Highway Department
County Surveyor's Office
8045 County Road 12
Walker, MN 56484
218-547-1211