



A000711245

OFFICE OF THE COUNTY RECORDER  
CASS COUNTY, MINNESOTA  
CERTIFIED, FILED, AND/OR  
RECORDED ON

5/12/2025 9:55:53 AM

AS DOC #: A000711245

PAGES: 2

REC FEES: 0.00

BY BA Dep TX#: 203694

I hereby certify that this survey, plan, or report was prepared by me or under my direct supervision and that I am a duly Licensed Land Surveyor under the laws of the state of Minnesota.

Daniel J. McAninch 9 May 2025  
Daniel J. McAninch, L.S. Date  
MN LIC. # 25684

## CERTIFICATE OF LOCATION OF GOVERNMENT CORNER

EAST QUARTER Corner of Section 17, Township 133 N, Range 30 W, 5th P.M.  
County of Cass, State of Minnesota

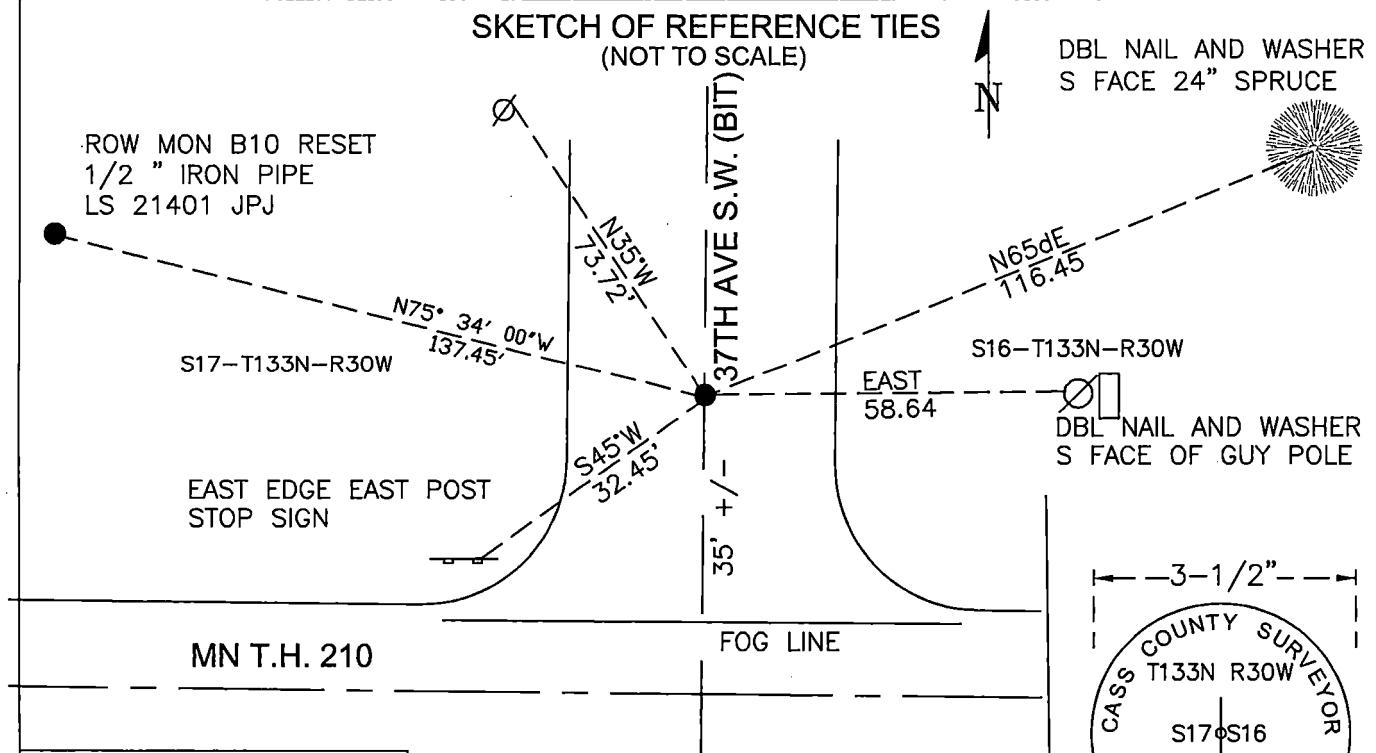
At the corner location shown on the sketch:

☒ On 06/01/2022 found NOTHING

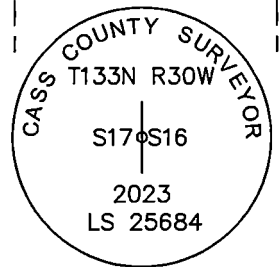
☐ left monument as found ☐ lowered monument ☐ removed monument (explain)

☒ On 10/12/2023 set 3/4" aluminum pipe with a 3-1/2" diameter aluminum cap  
stamped per detail below right. MNDOT ROW PLAT NO. was used for location.

### SKETCH OF REFERENCE TIES (NOT TO SCALE)



Cass County Coordinates  
(North Zone, 2011 Adj.)  
N: 164391.375  
E: 497979.629



Cap Stamping Detail

**STATEMENT OF EVIDENCE:**

EAST QUARTER CORNER SECTION 17,  
TOWNSHIP 133 NORTH, RANGE 30 WEST,  
CASS COUNTY, MINNESOTA

- 1870** The original public land survey was completed under William P. Allen and a wood post was set to mark the corner.
- |                   |       |                   |
|-------------------|-------|-------------------|
| 4" Willow         | N23dW | 14 links (9.2')   |
| 6" Balm of Gilead | N57dE | 123 links (81.2') |
- 1911** John Curo , L.S. 1428, found an old cast iron sled shoe and the root of the NW bearing tree (Willow). He set a 2" diameter by 48" long iron pipe. (Cass Survey Book A, Page 353)
- 1944** An unknown surveyor called for an iron pin at the intersection of roads. (see Doc. 432820)
- 1952** After realignment of T.H. 210, an unknown surveyor called for the monument to be 63.5 feet North of the CL of Trunk Highway 210. Bearing ties were made to a garage foundation , an Elm tree, and an iron pipe. (See Doc. 432820)
- 1984** Ron Murphy, L.S. 10382 set a Cass County cast iron monument. (See Doc. 276577)
- 1999** James Kramer, L.S. 23668, of MNDOT recovered a Cast Iron Monument and three 1984 bearing ties. An additional bearing tie was made to a power pole. See corner cert recorded as Doc. 432820.
- 2001** MNDOT RIGHT OF WAY PLAT 11-21 shows a monumented position for this corner and its relationship to other right of way B monuments and section corners. It also provides a Cass County Coordinate for the corner on NAD 83, 1996 adjustment.
- 2022** A Cass County Crew was unable to find a monument or any record ties. Using found B-Monuments and section corners, the corner was reset at a position that agrees within 0.04 feet with the masured coordinates published by MNDOT. This position is accepted as perpetuation of the original corner. See Page 1 for ties. (Cass Survey Proj 2022-006)

For additional information contact:  
**Cass County Highway Department**  
**County Surveyor's Office**  
8045 County Road 12  
Walker, MN 56484  
218-547-1211